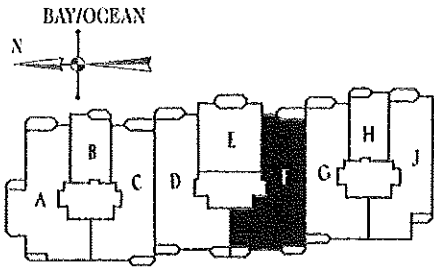


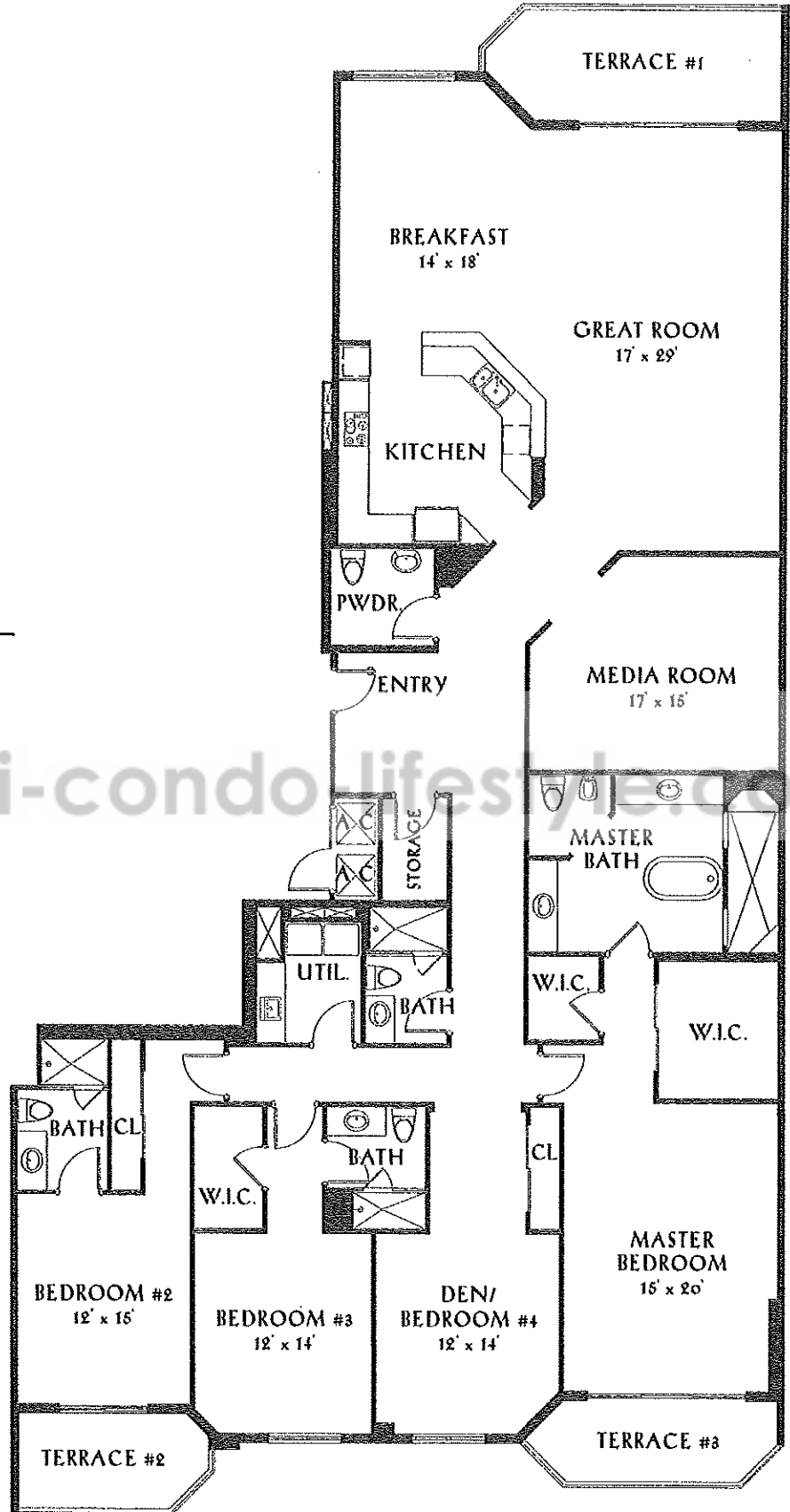
# PENINSULA II



## RESIDENCE F

4 BEDROOMS, 4.5 BATHS,  
+ MEDIA ROOM

DWELLING UNIT:	3524 SQ. FT.
TERRACE 1:	156 SQ. FT.
TERRACE 2:	89 SQ. FT.
TERRACE 3:	96 SQ. FT.
<b>TOTAL RESIDENCE:</b>	<b>3865 SQ. FT.</b> 359 M <sup>2</sup>



AREAS AND DIMENSIONS SHOWN HERE ARE PER ARCHITECTURAL MEASUREMENT PRACTICE WHICH YIELD RESULTS WHICH DIFFER FROM ACTUAL MEASUREMENTS FOR CONDOMINIUM DOCUMENT PURPOSES.  
061037