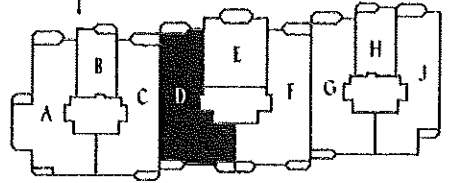


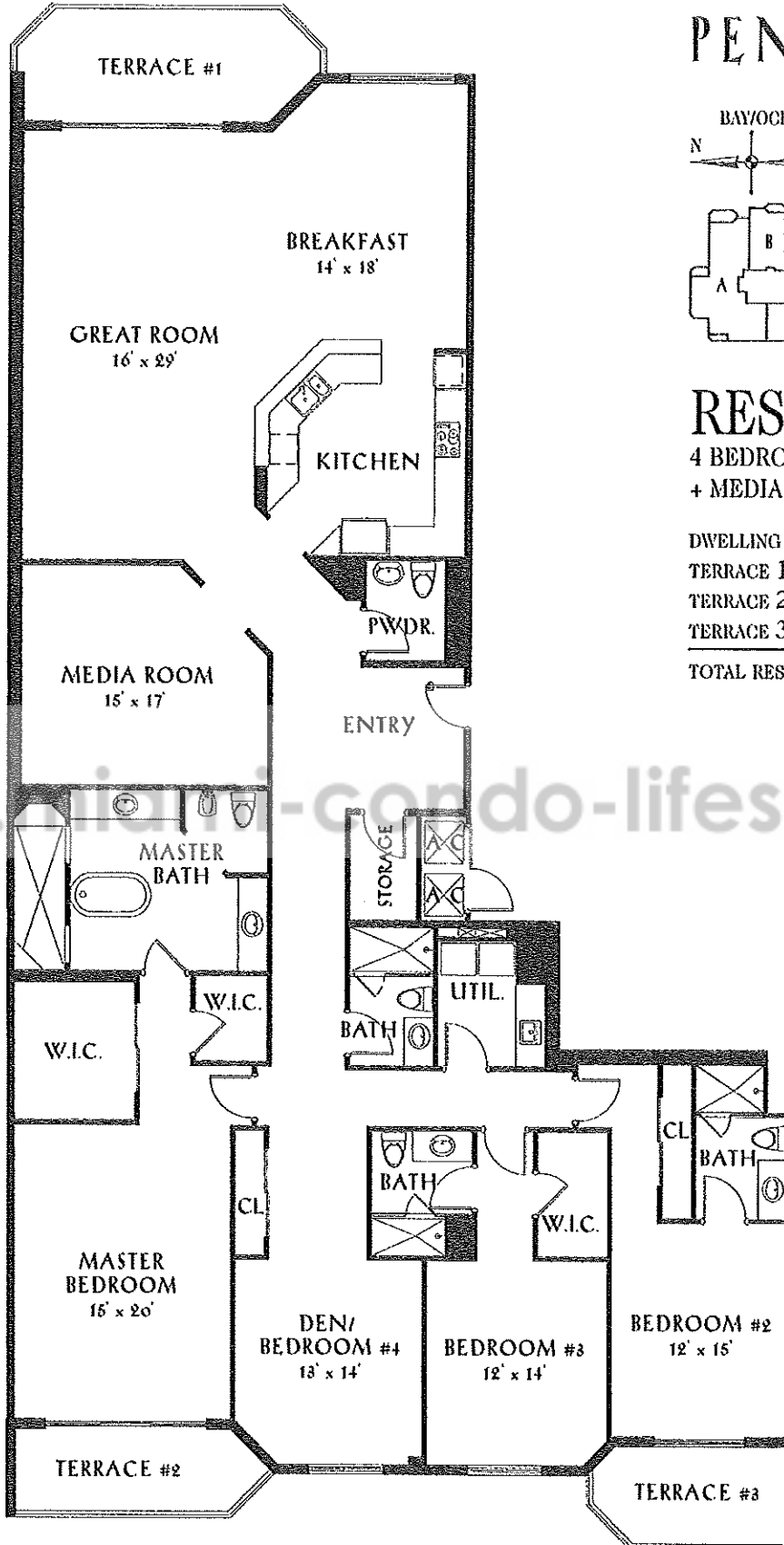
PENINSULA II



RESIDENCE D

4 BEDROOMS, 4.5 BATHS
+ MEDIA ROOM

DWELLING UNIT:	3464 SQ. FT.
TERRACE 1:	153 SQ. FT.
TERRACE 2:	96 SQ. FT.
TERRACE 3:	89 SQ. FT.
TOTAL RESIDENCE:	3802 SQ. FT. 353 M ²



AREAS AND DIMENSIONS SHOWN HERE ARE PER ARCHITECTURAL MEASUREMENT PRACTICE WHICH YIELD RESULTS WHICH DIFFER FROM ACTUAL MEASUREMENTS FOR CONDOMINIUM DOCUMENT PURPOSES.
031107