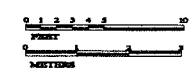


www.miami-condo-lifestyle.com

ROOF UPPER PENT HOUSE 01-02

3 BEDROOMS / ENTERTAINMENT / EXERCISE / ROOF ACCESS / 5.5 BATHS

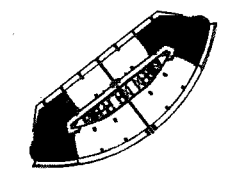
INTERIOR	4,522 SQ. FT. / 420.11 SQ. M.
TERRACE	2,966 SQ. FT. / 275.55 SQ. M.
TOTAL RESIDENCE	7,488 SQ. FT. / 695.66 SQ. M.



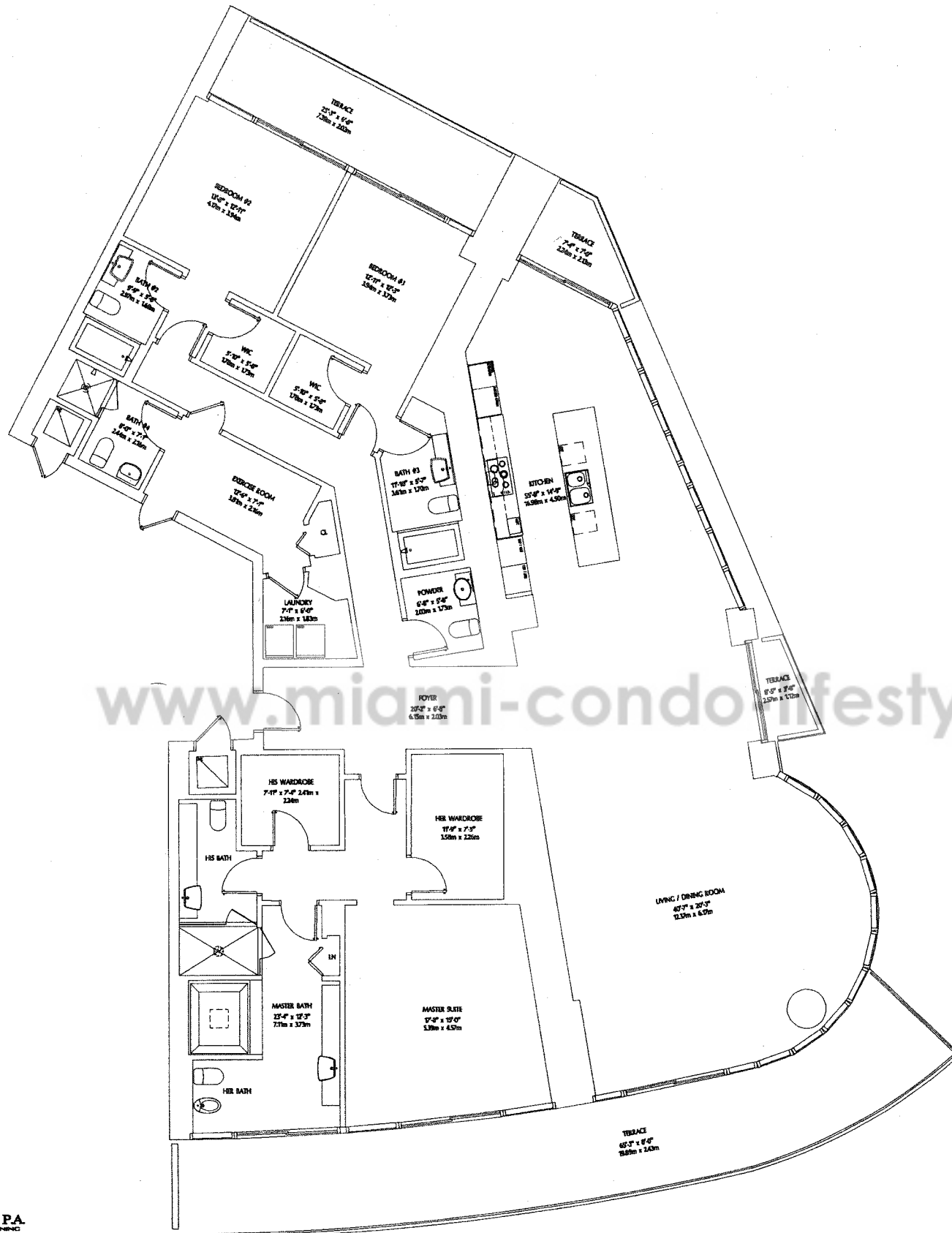
DUPONT CONDOMINIUM WEST TOWER

11-02-05 **REVUELTA VEGA LEON P.A.**
 ARCHITECTURE INTERIOR DESIGN PLANNING

Plan, materials and specifications are subject to architectural and other revisions at the sole discretion of the developer, builder or architect, or as may be requested by law. Floor plans shown are not to any particular scale. All dimensions are measured to the exterior boundaries of the exterior walls, corridor walls and to the centerline of interior demising walls and may vary from the description and definition of the "unit" set forth in the declaration. All dimensions are approximate, and all floor plans and development plans are subject to change. Oral representations can not be relied upon to correctly state the representations of the developer. For correct representations, make reference to the documents required by section 718.503 Florida Statutes, to be furnished by a developer to a buyer or lessee. This is not an offer to sell, or solicitation of offers to buy the condominium units in states where such offer of solicitation can not be made.



N
 KEY PLAN

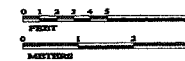


www.miami-condo-lifestyle.com

UNIT TYPE UPPER PENTHOUSE 01-02

3 BEDROOMS / EXERCISE / 4.5 BATHS

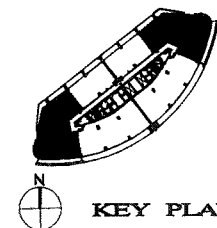
INTERIOR	3,392 SQ. FT. /	315.13 SQ. M.
TERRACE	767 SQ. FT. /	71.26 SQ. M.
TOTAL RESIDENCE	4,159 SQ. FT. /	386.39 SQ. M.



DUPONT CONDOMINIUM WEST TOWER

11-02-05 REVUELTA VEGA LEON P.A.
ARCHITECTURE • INTERIOR DESIGN • PLANNING

Plan, materials and specifications are subject to architectural and other revisions at the sole discretion of the developer, builder or architect, or as may be requested by law. Floor plans shown are not to any particular scale. All dimensions are measured to the exterior boundaries of the exterior walls, corridor walls and to the centerline of interior dividing walls and may vary from the description and definition of the "unit" set forth in the declaration. All dimensions are approximate, and all floor plans and development plans are subject to change. Oral representations can not be relied upon to correctly state the representations of the developer. For correct representations, make reference to the documents required by section 718.503 Florida Statutes, to be furnished by a developer to a buyer or lessee. This is not an offer to sell, or solicitation of offers to buy the condominium units in states where such offer of solicitation can not be made.



KEY PLAN