



# Tequesta Point



FULL HEIGHT  
FIXED GLASS



MASTER BEDROOM  
13'-0" X 16'-4"  
4.0m X 5.0m

BALCONY  
20'-8" X 8'-2"  
6.3m X 2.5m

WALK IN  
CLOSET

MASTER  
BATH

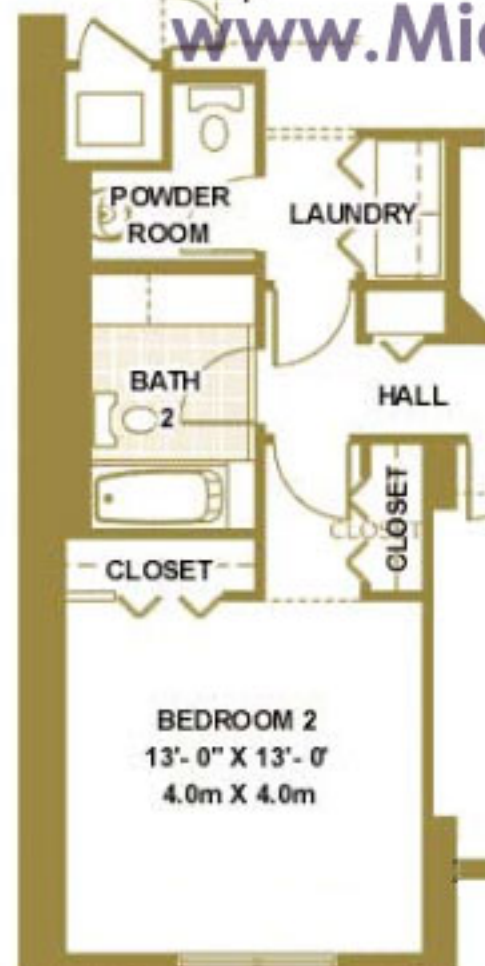
HALL

CLOSET

LIVING ROOM  
15'-10" X 24'-0"  
4.8m X 7.3m

BALCONY  
7'-0" X 16'-4"  
2.1m X 5.0m

[www.MiamiCondoLifestyle.com](http://www.MiamiCondoLifestyle.com)



POWDER  
ROOM

LAUNDRY

BATH

HALL

CLOSET

CLOSET

DINING ROOM  
15'-4" X 10'-0"  
4.7m X 3.0m

BREAKFAST  
15'-4" X 10'-0"  
4.7m X 3.0m

KITCHEN  
14'-0" X 13'-0"  
4.3m X 4.0m

BEDROOM 3  
12'-8" X 13'-6"  
3.9m X 4.1m

BEDROOM 2  
13'-0" X 13'-0"  
4.0m X 4.0m

Enclosed Area

2,353 Sq. Ft.

218.7 Sq. Mt.

Balcony/Terrace Area

290 Sq. Ft.

27.0 Sq. Mt.

Total Residence

2,643 Sq. Ft.

245.7 Sq. Mt.

## Residence 01

Floor 6 Through 44

3 Bedrooms

2 1/2 Baths with  
Breakfast Room

Not to scale. All dimensions are approximate and subject to change in accordance with the agreement for sale. Oral representations cannot be relied upon as correctly stating the representations of the developer. For correct representations make reference to the documents required by Section 718.503 Florida Statutes to be furnished by developer to buyer or lessee. Stated dimensions are measured to the exterior boundaries of exterior walls, corridor walls and to the centerline of interior demising walls and may vary from the description and definition of the "Unit" set forth in the Declaration. All dimensions are approximate and all floor plans and development plans are subject to change.

