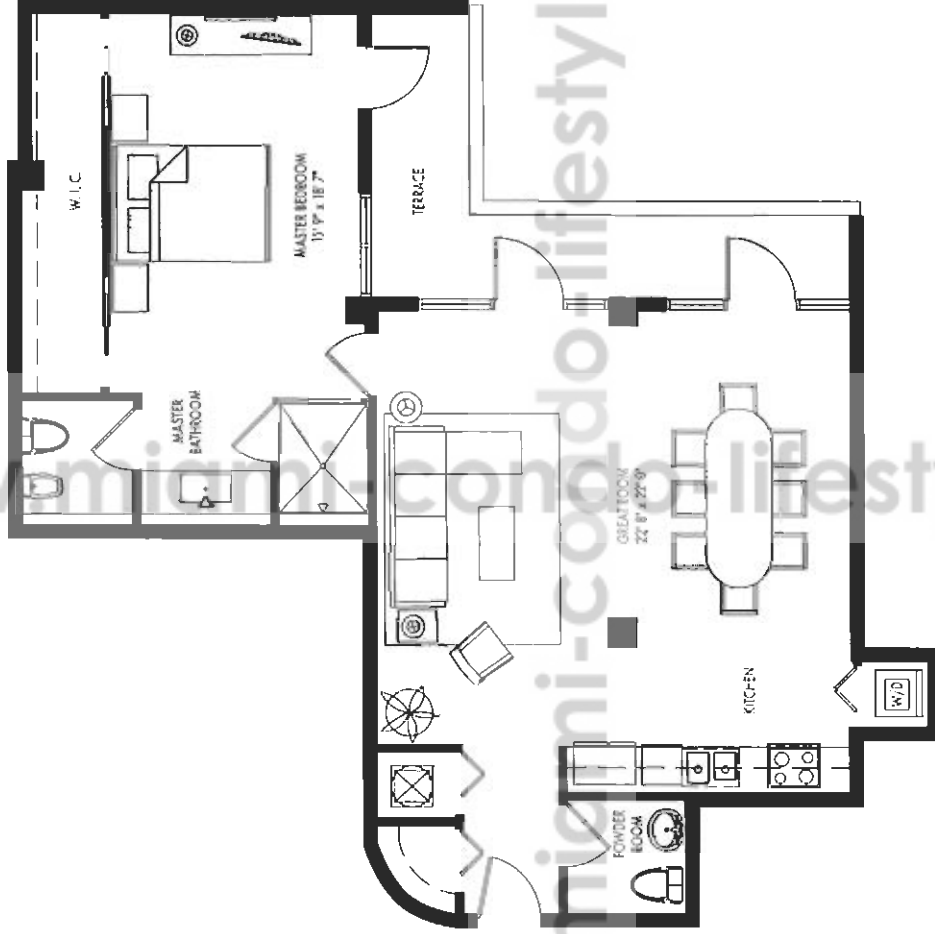




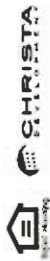
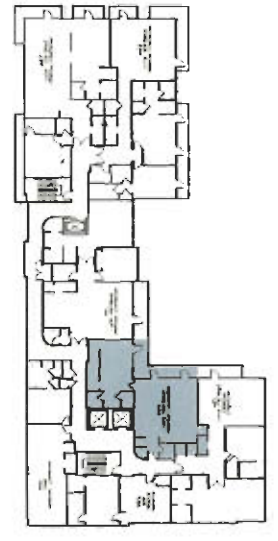
CARIBBEAN

NORTH TOWER - UNIT K



TOTAL 1,129 sq. ft.

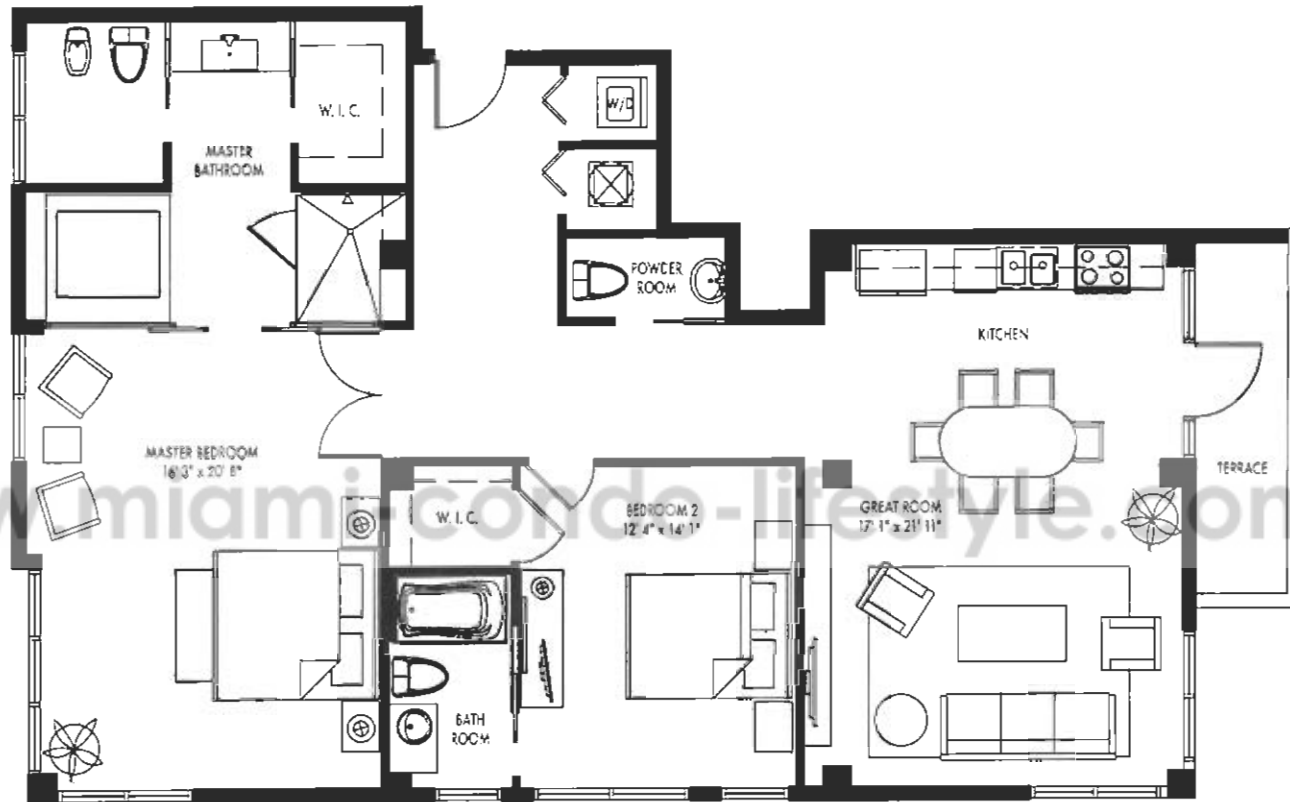
1 BEDROOM / 1.5 BATHS



Plans, Features and Specifications subject to change without notice. The Developer makes no representations or warranties regarding the actual size and dimensions of the units contained in this brochure and no liability may be taken thereon. Determining whether to purchase a unit and the purchase price, if any, is the responsibility of the actual buyer and property manager. The location of common areas is shown in determining the boundaries and actual dimensions of units.

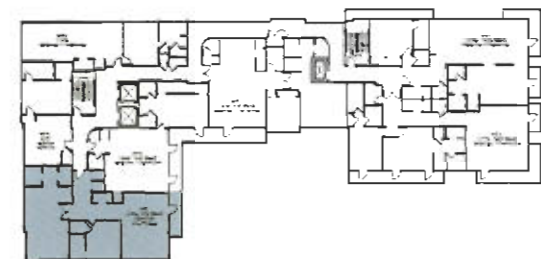


NORTH TOWER - UNIT L



2 BEDROOM / 2.5 BATHS

TOTAL 1,612 sq.ft.



CHRISTA

BLUEROCK REAL ESTATE



Prices, Features and Specifications subject to change without notice. The developer makes no representation or warranty regarding the actual size and dimensions of the units contained in this brochure and no party may rely upon the same in determining whether to purchase a unit and the purchase price of the unit. The survey of the actual units and portions of the Association of condominium shall control in determining the boundaries and actual dimension of units.