



LEGACY  
HOTEL & RESIDENCES



Introducing  
**LEGACY**  
HOTEL & RESIDENCES

A residence you buy for yourself,  
and for generations to come.



LEGACY  
MIAMI



This is where events  
happen in the sky,  
your swim is in the air,  
deals get done and  
health is your new wealth.



Legacy is both luxury hotel and residential tower featuring 278 branded residences sitting above a 255 room hotel.

Just a short distance from Brickell, South Beach, Wynwood, Design District and Little Havana, Miami Worldcenter truly puts you at the center of it all.

Legacy Hotel will be one of downtown Miami's only luxury hotels. Within a master plan that includes a convention center, entertainment, restaurants and high-end retail, all helping to drive reservation demand year round.







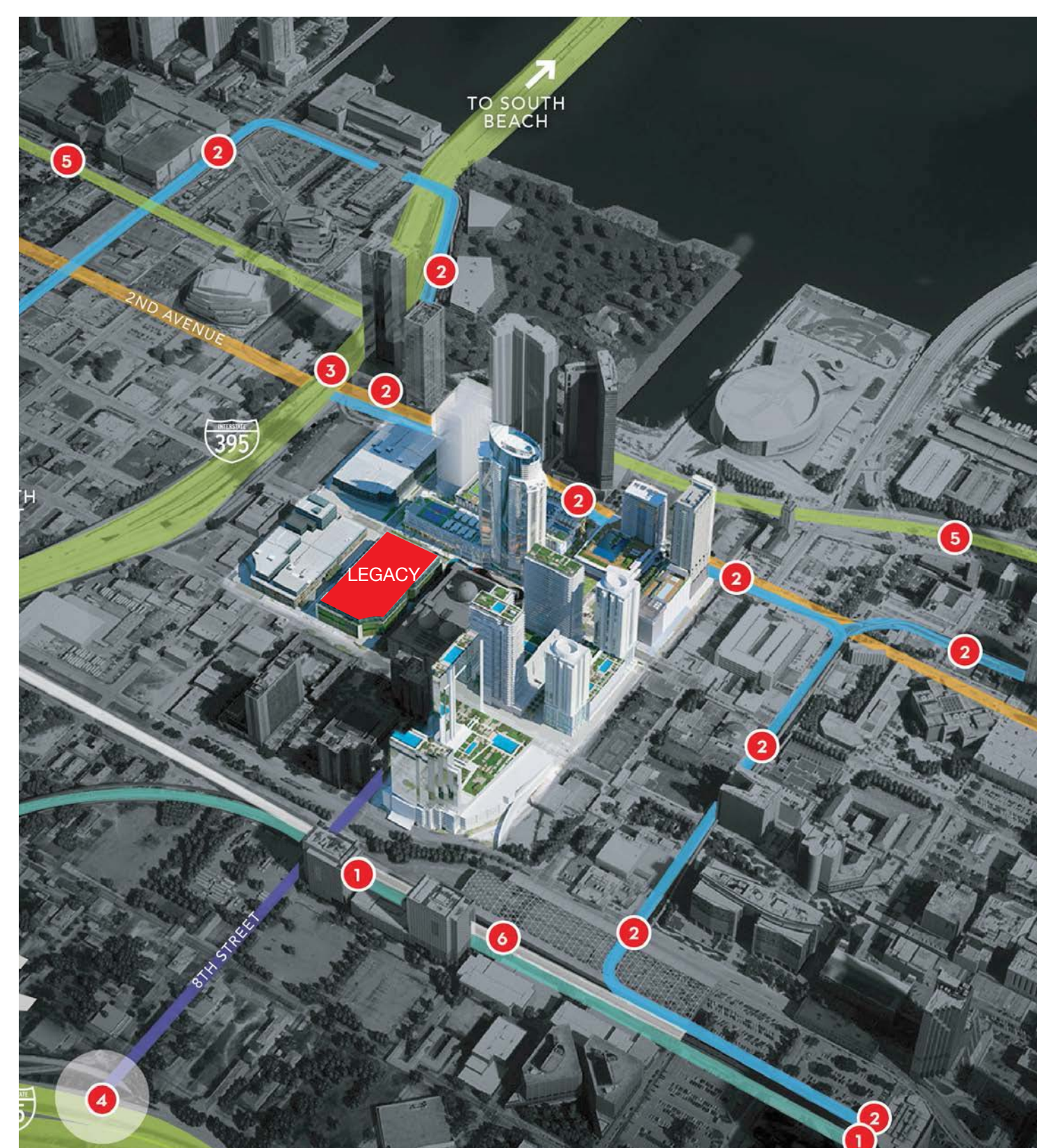


LEGACY PROVIDES UNMATCHED ACCESSIBILITY

150 MILLION TRANSIT TRIPS

CONVENIENTLY LOCATED NEXT TO I-95 AND I-395

- Virgin MiamiCentral Station -- New trains transporting visitors from Miami to Orlando in three hours with expansion coming
- Metrorail and Metromover stations
- Minutes from the Miami International Airport
- Thousands of new parking spaces giving visitors to nearby attractions a convenient place to park.



- 1 MetroRail Line + Station  
- 22.5 million riders annually
- 2 MetroMover + Station  
- 10 million riders annually  
- 3 stops directly at MWC site
- 3 I-395 + 2nd Avenue  
- 43 million vehicles annually  
- 117,500 vehicles daily
- 4 I-95 + 8th Street  
- 55 million vehicles annually  
- 152,500 vehicles daily
- 5 Biscayne Boulevard  
- 15 million vehicles annually
- 6 All Aboard Florida - Virgin Trains  
- 10 million projected visitors



# LEGACY

## WORLD PROMENADE

Regional Fashion Retailers  
Anchored by Regional and Local  
High-end Restaurants

## ENTERTAINMENT HUB

90,000 sq. ft. World Class  
Entertainment including a Food Hall,  
Experience Oriented Activities and a  
Citizen M Hotel

## WORLD SQUARE

The Heart of Miami Worldcenter  
used for Community Gatherings,  
Open Markets and Concerts

## ROOFTOP RESTAURANT

Exciting Chef Driven &  
Best in Class Restaurants

## 7TH ST. PROMENADE

Daily Necessities: Hair Salon, Nail  
Bar, Coffee Shops, Ice Cream Shops,  
Banks, and Corner Restaurant.

## MARRIOTT MARQUIS HOTEL AND CONVENTION CENTER

600,000 sq. ft. of Convention Space  
1,800 Luxury Hotel Rooms

## VIRGIN TRAINS

Express Passenger Rail Service  
between Miami, Fort Lauderdale,  
West Palm Beach and Orlando. (2022)



MIAMI  
WORLD CENTER

ARTIST CONCEPTUAL RENDERING. DEVELOPER MAY CHANGE WITHOUT NOTICE.



# DISCOVER *DOWNTOWN MIAMI*

## 1 MUSEUM PARK

Breathtaking views of the Biscayne Bay and the glittering Miami skyline around, it is a gorgeous undulating green expanse of 30 acres. The park is home to the Phillip and Patricia Frost Museum of Science and its waterfront treasure - Perez Art Museum Miami.

## 2 AMERICAN AIRLINES ARENA

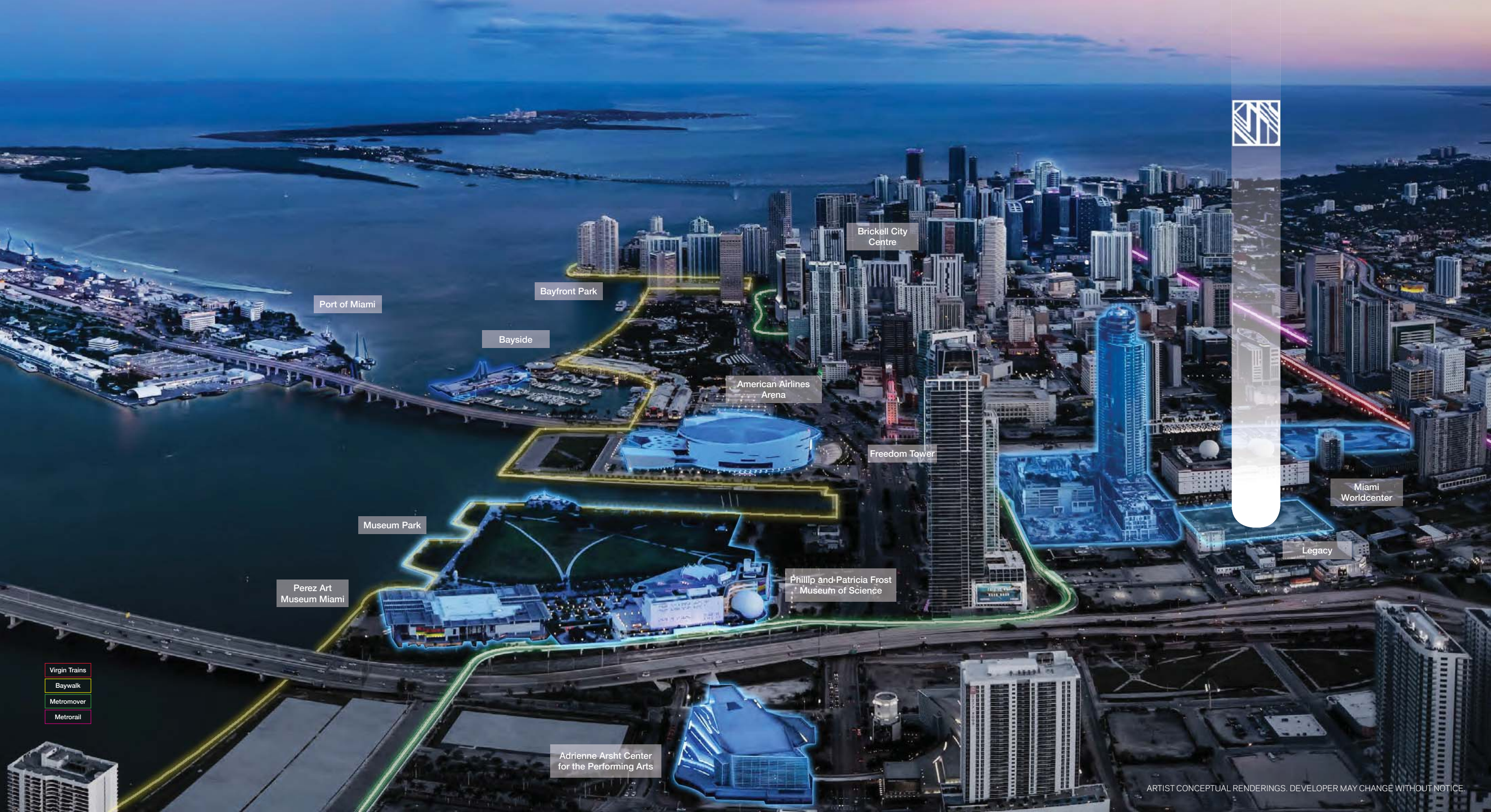
The 20,000-seat American Airlines Arena, home to the NBA Miami Heat, is nestled on the majestic Biscayne Bay. Besides its sports accommodation, American Airlines Arena hosts world-class concerts and shows, from Adele to Jennifer Lopez.

## 3 ADRIENNE ARSHT CENTER

The Adrienne Arsht Center, designed by world-renowned architect Cesar Pelli, is one of the most important performing arts venues, with two major single-purpose halls created to present the finest in classical and popular entertainment, from 'Hamilton' to 'Don Quixote'.

## 4 MIAMI WORLDCENTER

Miami Worldcenter is stated to be a magnetic destination for tourists and business visitors in the heart of Downtown. This is the biggest mixed-use development in the U.S. after New York's Hudson Yards.





CHANGING RESIDENTIAL HOSPITALITY FOREVER.



FIRST OF ITS KIND ROOFTOP ATRIUM

1



THE ONLY INTERNATIONAL BUSINESS LOUNGES

2



THE FUTURE OF WELLNESS & MEDICINE

3



OUR EXCLUSIVE **MICROLUXE**® ROOM DESIGN

4

This is the new luxury.

ARTIST CONCEPTUAL RENDERINGS. DEVELOPER MAY CHANGE WITHOUT NOTICE.



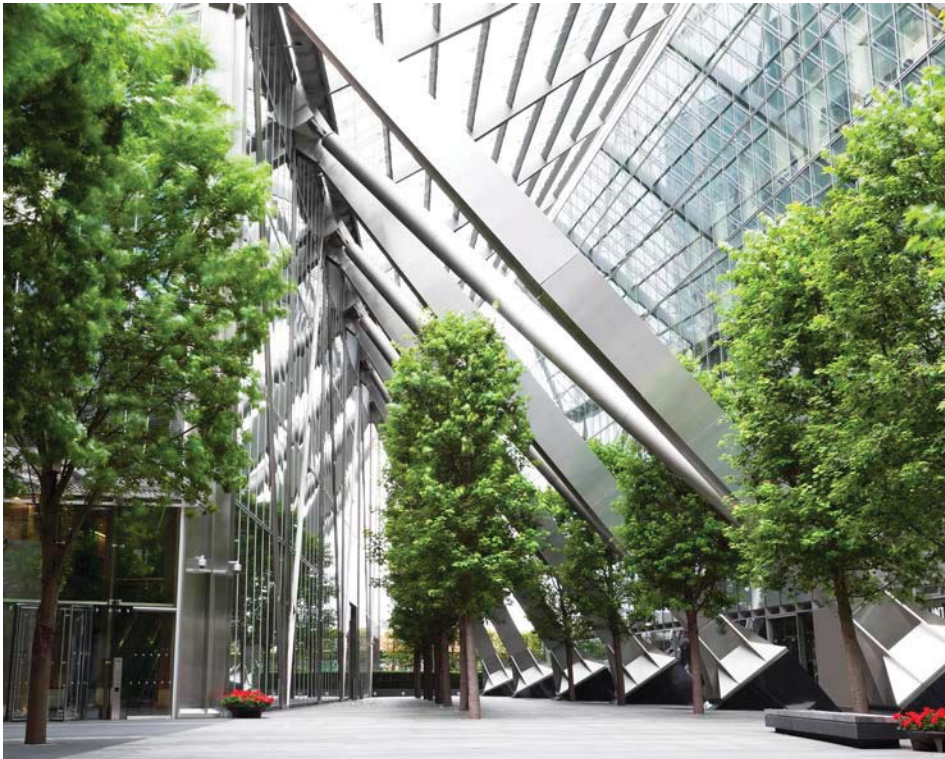
# ROOFTOP ATRIUM EVENT SPACE AND PLAYGROUND

The Atrium is an intimate place for residents and the ultimate public/private space in Miami. Friends, family and co-workers will host their most prestigious events in this city here. The Atrium is Miami's first fully enclosed glass rooftop that gives event-planners the perfect space to plan with its soaring views of downtown, cantilevered glass pool hanging off the edge of the space, air conditioning and of course protection from any rain. No need for contingencies here.

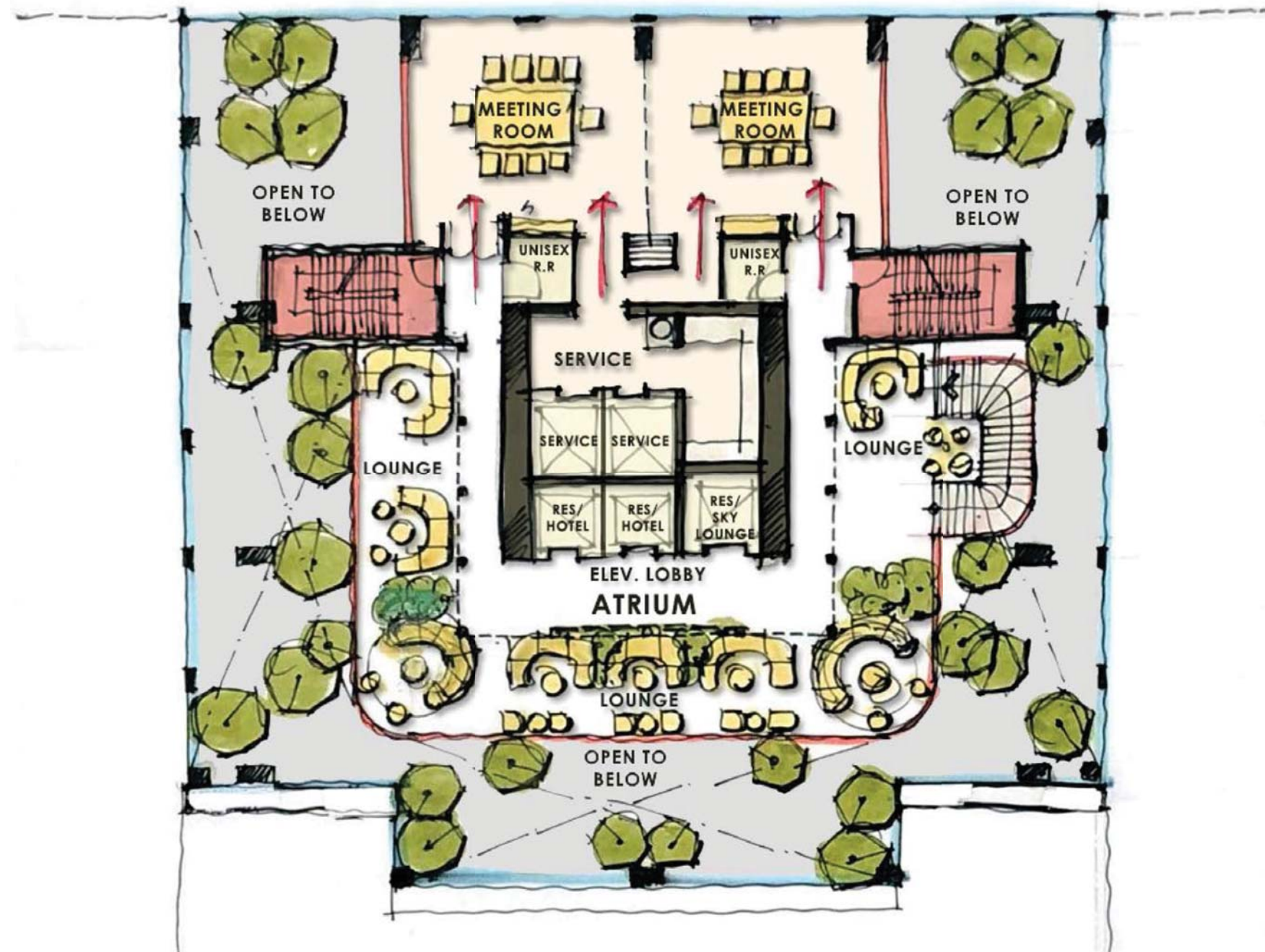
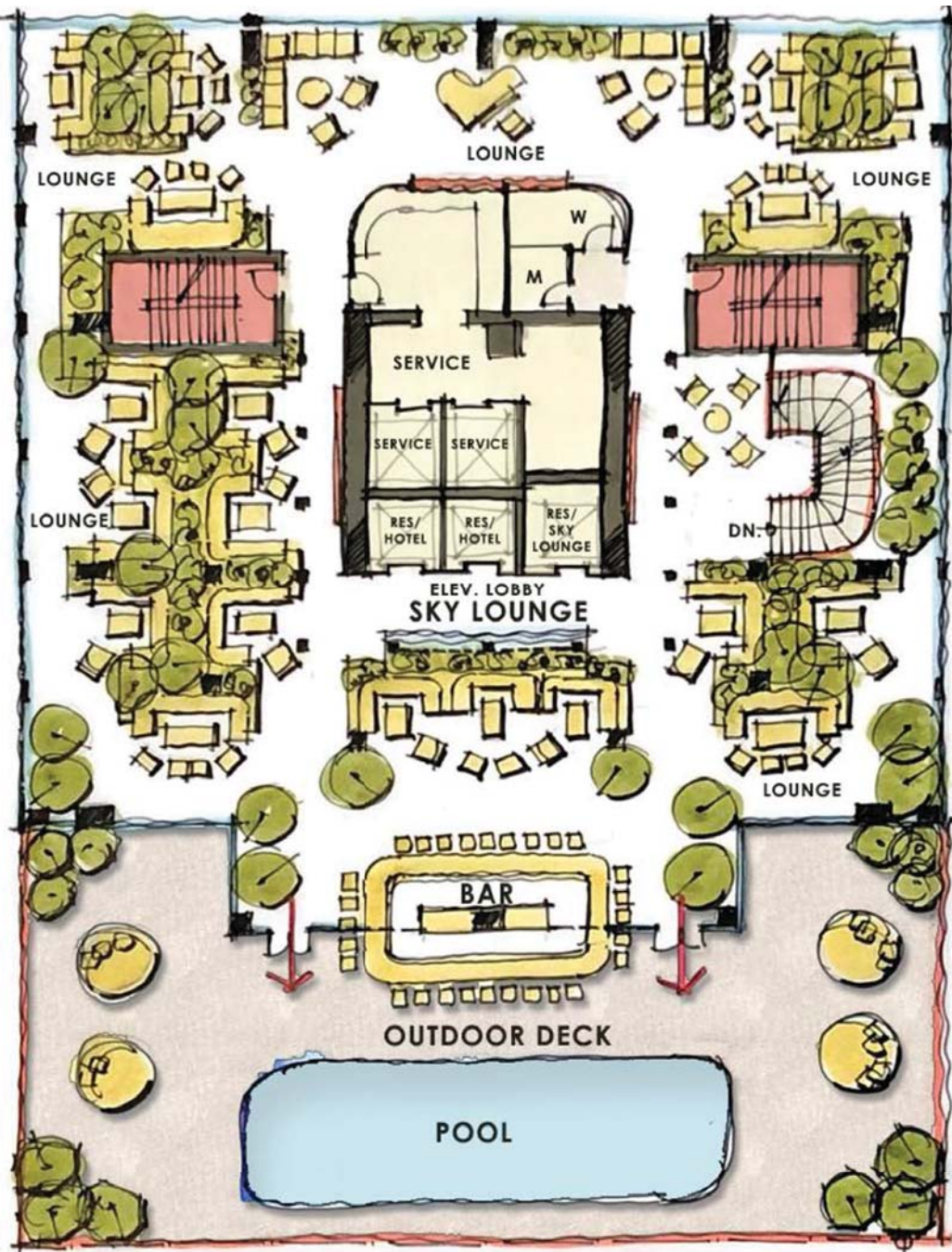
The rest of Miami will immerse itself into our SkyBar with endless sunsets, cocktails and lite bites as you converse with acquaintances. *This is the first Atrium of its kind in Miami.*



ARTIST CONCEPTUAL RENDERINGS. DEVELOPER MAY CHANGE WITHOUT NOTICE.











ARTIST CONCEPTUAL RENDERINGS. DEVELOPER MAY CHANGE WITHOUT NOTICE.



## Introducing Miami's first INTERNATIONAL BUSINESS LOUNGE

The International business lounge is a timeless and tailored setting for intimate social and business experiences.

A place guests can relax over the perfect cup of coffee and face to face talk about important things with no distractions.

It is a rare delight and a place designed to be where deals to get done.

***IBL***



HEALTH IS THE  
NEW WEALTH

Our VIP medical and wellness center is designed to diagnose your health. Using technology and expertise, the future of understanding the things that matter most both in body and mind will be displayed on a dashboard before you with protocols you can perfect yourself with. Like never before you will have unparalleled access to the best practitioners and technology in the areas of health, wellness, beauty and longevity. From herbal baristas to IV solutions and hormone balancing, you can soon experience the ultimate version of you. *Own where the first downtown longevity, vitality and surgical center in Miami lives.*



ARTIST CONCEPTUAL RENDERINGS. DEVELOPER MAY CHANGE WITHOUT NOTICE.







# MICROLUXE<sup>®</sup>

## ROOM DESIGN

Legacy Hotels & Residences will exist at the confluence of elegance and functionality. State-of-the-art digital resources and ergonomic integration will be woven into living spaces that marry a refined quality of life with commercial practicality and ease of ownership. Every innovation is intended to help guests simplify, streamline, and personalize their stay while enhancing our buyer experience as well.

Legacy Hotels & Residences is developing a technology-driven approach to real-time communication and connectivity for both guests and owners. Everyone will be just a click away from a reservation, concierge, check-in arrival and much more.

*Legacy is the first high-end, high-touch hotel and residence experience that incorporates a holistic lifestyle and guest experience that energizes the mind and calms the spirit.*

ARTIST CONCEPTUAL RENDERINGS. DEVELOPER MAY CHANGE WITHOUT NOTICE.



# EVERYTHING HAS ITS PLACE

BESPOKE RESIDENCE INTERIORS THAT ARE LARGER AND COME WITH KITCHENS AS WELL AS WASHER/DRYER COMBINATIONS



ARTIST CONCEPTUAL RENDERINGS. DEVELOPER MAY CHANGE WITHOUT NOTICE.



COMPLIMENTARY AND **NOT COMPETITIVE** WITH HOTEL ROOMS BELOW

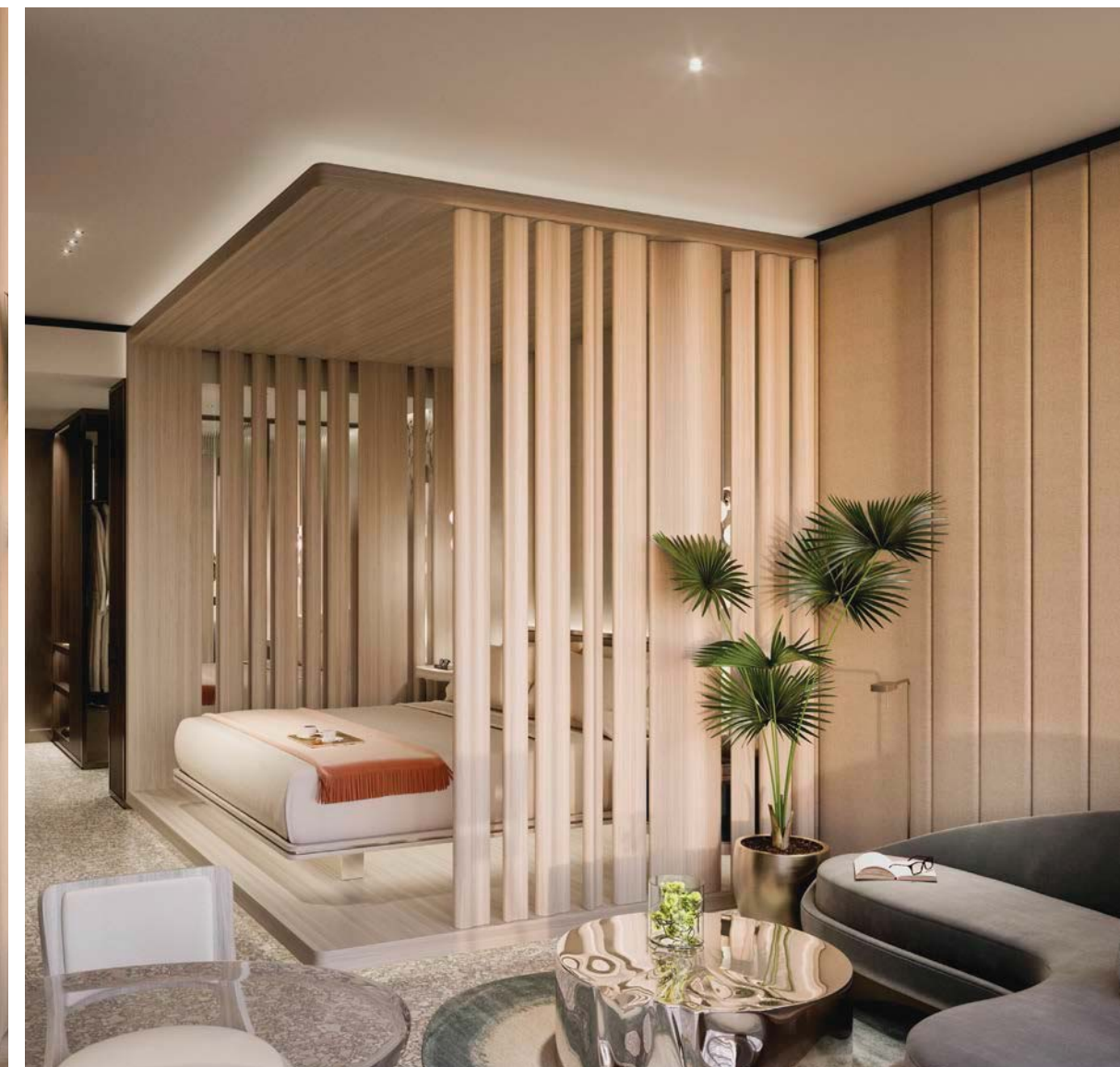


BESPOKE RESIDENCE INTERIORS THAT ARE LARGER AND COME WITH KITCHENS AS WELL AS WASHER/DRYER COMBINATIONS

COMPLIMENTARY AND **NOT COMPETITIVE** WITH HOTEL ROOMS BELOW



ARTIST CONCEPTUAL RENDERINGS. DEVELOPER MAY CHANGE WITHOUT NOTICE.

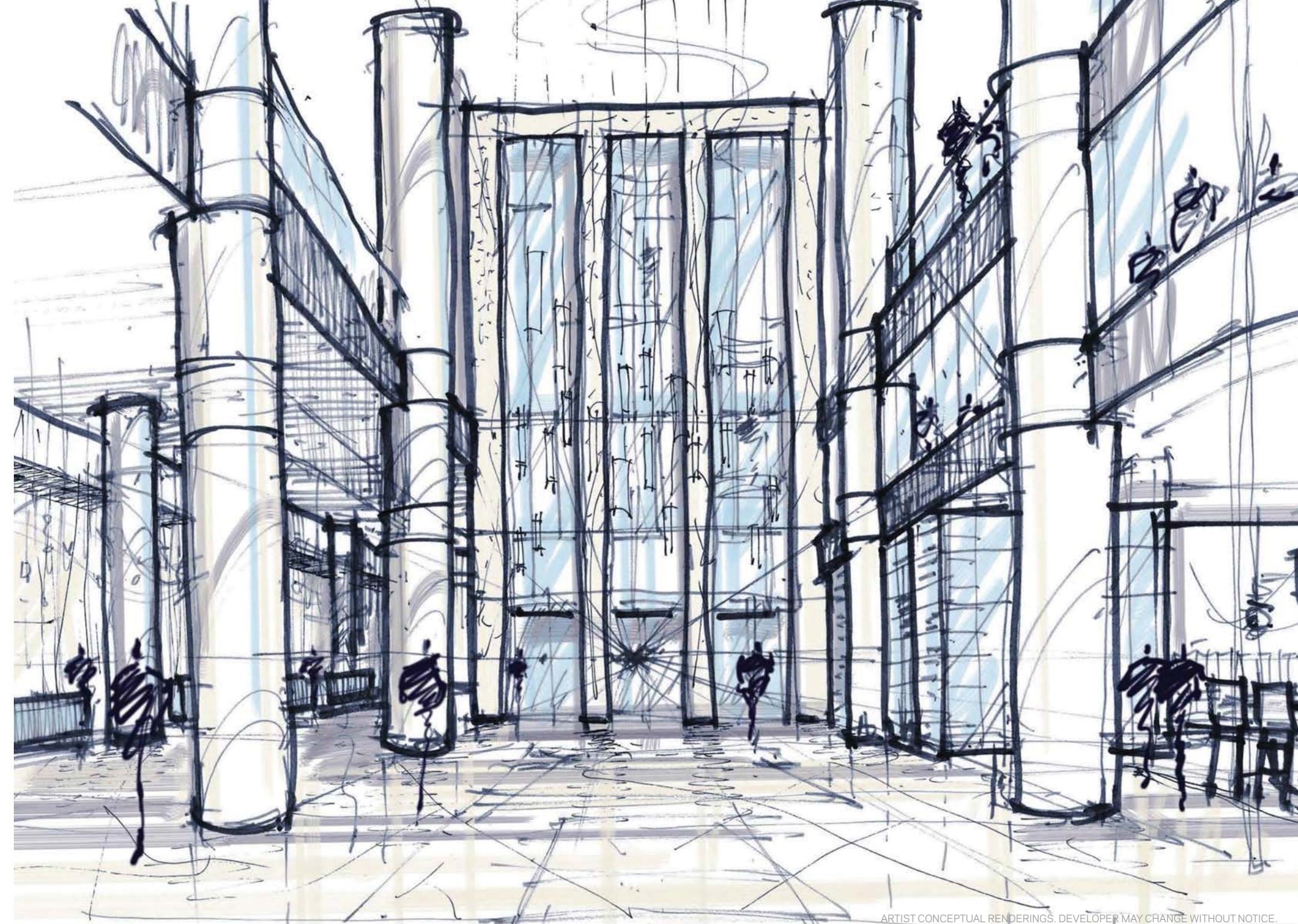




## THE LEGACY EXPERIENCE

Exemplified by extraordinary comfort with an unrivaled level of service and innovation.

Legacy can be a memorable escape or meaningful destination.



ARTIST CONCEPTUAL RENDERINGS. DEVELOPER MAY CHANGE WITHOUT NOTICE.





## WE HAVE 5 DIFFERENT TYPES OF ICE

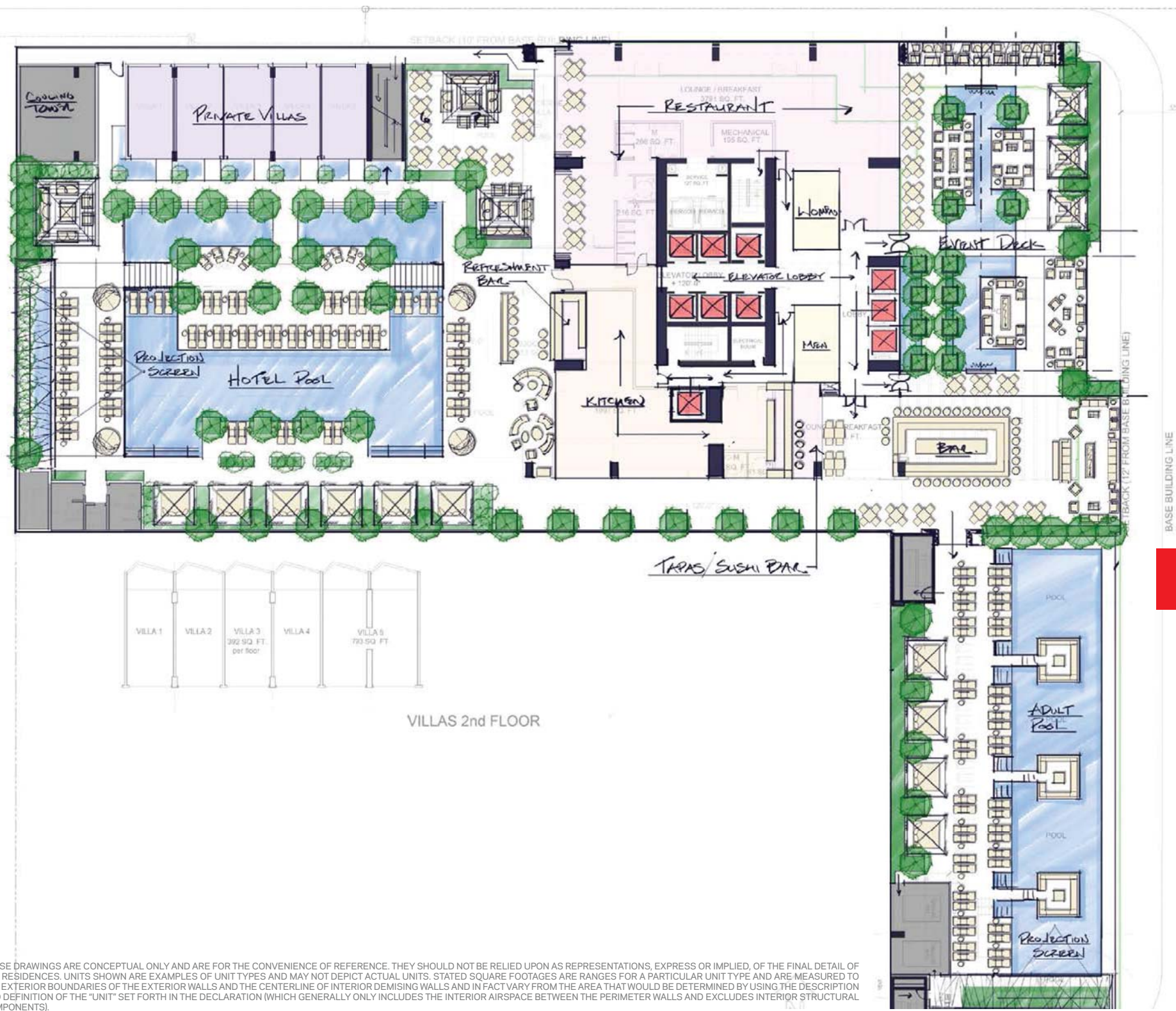
*This goes way beyond food and restaurants.* Types and shapes of ice generally sounds unimportant but in fact it speaks to the attention to detail a hotel and residence experience will offer. Legacy Hotel in downtown Miami will have superior offerings whether you are in the International Business Lounge, our 1-acre urban pool, rooftop atrium, signature restaurant or in-room.

*Raising the bar is an understatement.*

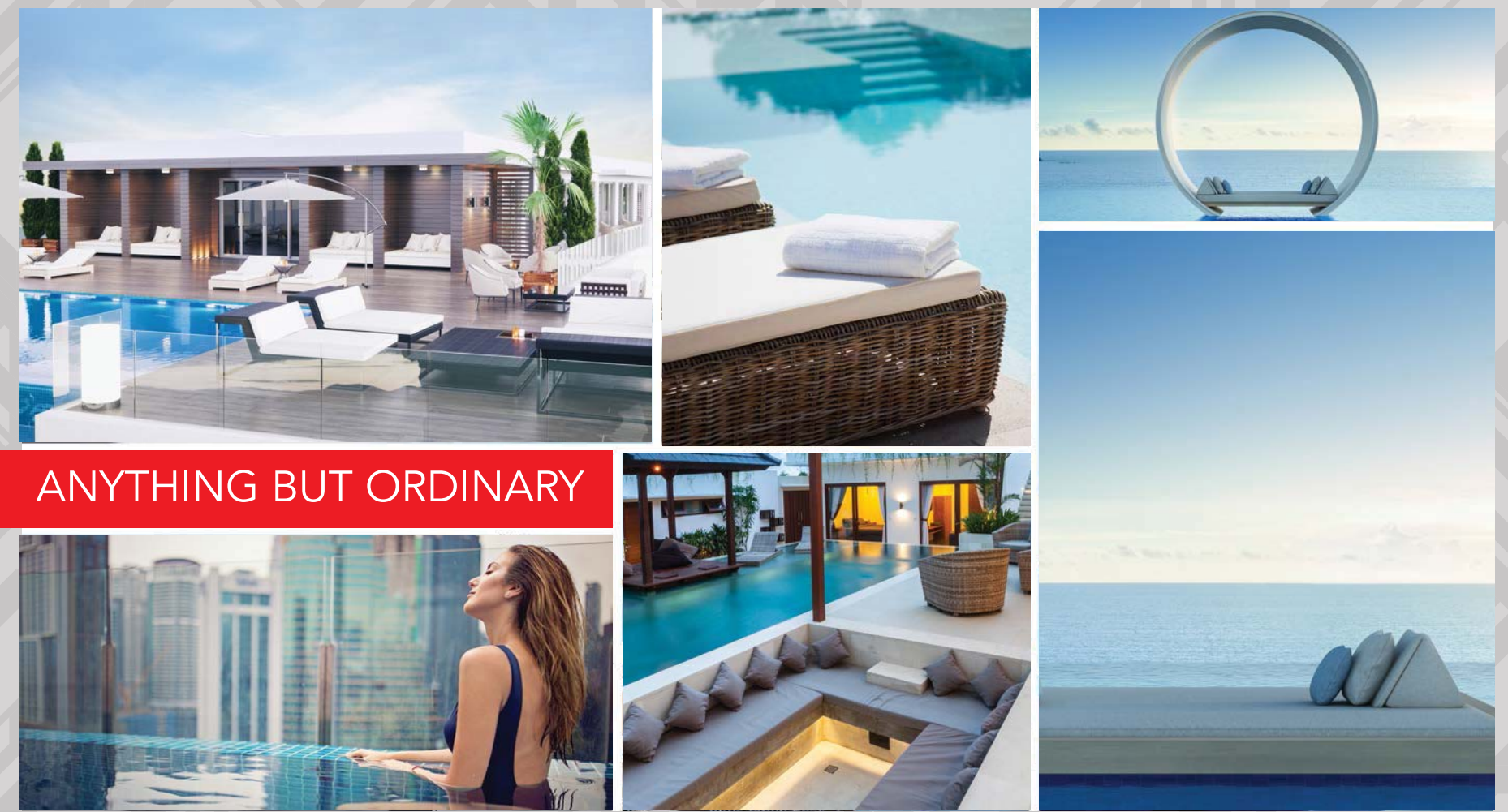


ARTIST CONCEPTUAL RENDERINGS. DEVELOPER MAY CHANGE WITHOUT NOTICE.





# THE LARGEST URBAN HOTEL POOL IN MIAMI

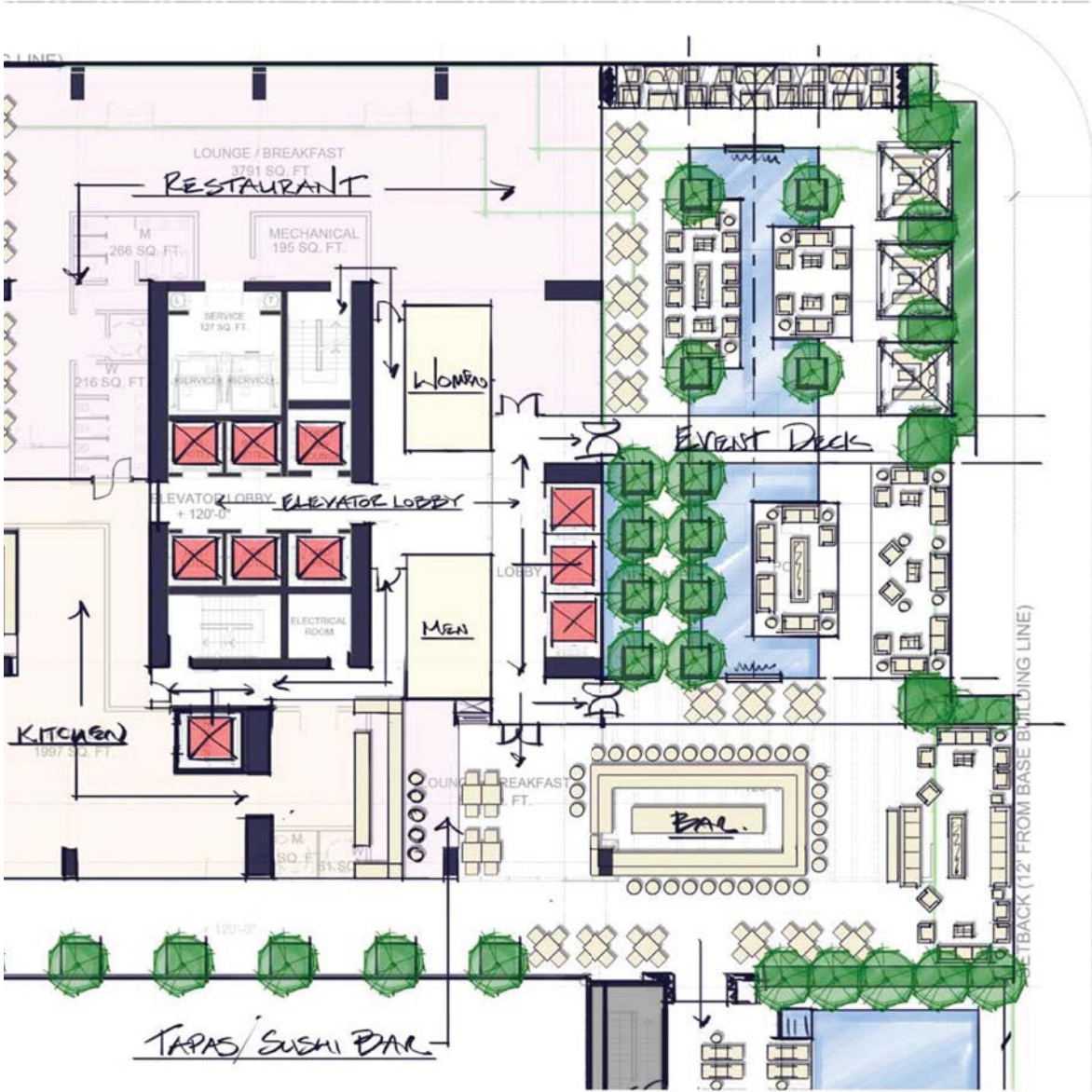


ANYTHING BUT ORDINARY

THESE DRAWINGS ARE CONCEPTUAL ONLY AND ARE FOR THE CONVENIENCE OF REFERENCE. THEY SHOULD NOT BE RELIED UPON AS REPRESENTATIONS, EXPRESS OR IMPLIED, OF THE FINAL DETAIL OF THE RESIDENCES. UNITS SHOWN ARE EXAMPLES OF UNIT TYPES AND MAY NOT DEPICT ACTUAL UNITS. STATED SQUARE FOOTAGES ARE RANGES FOR A PARTICULAR UNIT TYPE AND ARE MEASURED TO THE EXTERIOR BOUNDARIES OF THE EXTERIOR WALLS AND THE CENTERLINE OF INTERIOR DEMISING WALLS AND IN FACT VARY FROM THE AREA THAT WOULD BE DETERMINED BY USING THE DESCRIPTION AND DEFINITION OF THE "UNIT" SET FORTH IN THE DECLARATION (WHICH GENERALLY ONLY INCLUDES THE INTERIOR AIRSPACE BETWEEN THE PERIMETER WALLS AND EXCLUDES INTERIOR STRUCTURAL COMPONENTS).



# 3 Unique Aquatic Experiences



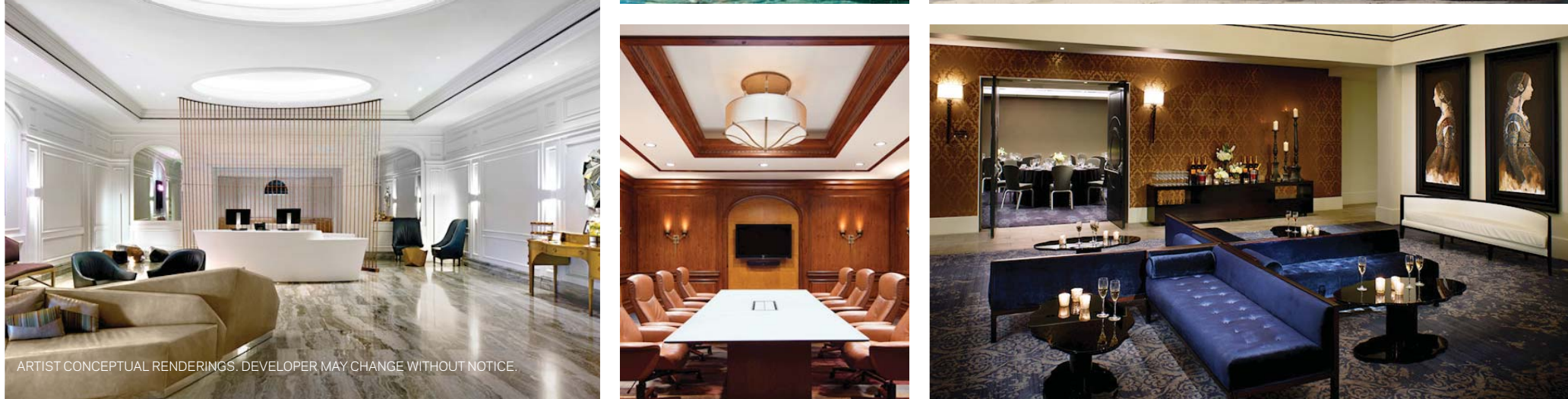
THESE DRAWINGS ARE CONCEPTUAL ONLY AND ARE FOR THE CONVENIENCE OF REFERENCE. THEY SHOULD NOT BE RELIED UPON AS REPRESENTATIONS, EXPRESS OR IMPLIED, OF THE FINAL DETAIL OF THE RESIDENCES. UNITS SHOWN ARE EXAMPLES OF UNIT TYPES AND MAY NOT DEPICT ACTUAL UNITS. STATED SQUARE FOOTAGES ARE RANGES FOR A PARTICULAR UNIT TYPE AND ARE MEASURED TO THE EXTERIOR BOUNDARIES OF THE EXTERIOR WALLS AND THE CENTERLINE OF INTERIOR DEMISING WALLS AND IN FACT VARY FROM THE AREA THAT WOULD BE DETERMINED BY USING THE DESCRIPTION AND DEFINITION OF THE "UNIT" SET FORTH IN THE DECLARATION (WHICH GENERALLY ONLY INCLUDES THE INTERIOR AIRSPACE BETWEEN THE PERIMETER WALLS AND EXCLUDES INTERIOR STRUCTURAL COMPONENTS).





## WORLD-CLASS HOSPITALITY MANAGEMENT COMES FROM *EXPERIENCE*

A remarkable thing happens when you bring people together who are driven by a common goal and personal passion to make a difference—they do. Every team member at Pivot Hotels & Resorts is united behind a singular vision: Delivering hospitality and creating value for every customer, every time. To date there are 33 luxury hotels managed throughout the United States.



ARTIST CONCEPTUAL RENDERINGS. DEVELOPER MAY CHANGE WITHOUT NOTICE



ASK US HOW WE ARE PUTTING OUR MONEY WHERE OUR MOUTH IS.





IF YOU PREFER SELF MANAGEMENT, THEN WHY LIMIT  
YOURSELF TO ONE WHEN  
YOU CAN **HAVE THEM ALL**

Enjoy the freedom of ownership - the way you like.

# GET *TURBO* *CHARGED*

OneFineStay 1  
Airbnb 2  
VRbO 3  
TripAdvisor 4  
Booking.com 5  
Home Away 6  
Flipkey 7  
HomeStay 8  
House Sitting 9  
Villas Direct 10  
VacationRentals.com 11

Wimdu 12  
Interhome 13  
ExecuStay 14  
Perfect Places That Come 15  
VacationRentals.com 16  
Turnkey 17  
Roomarama 18  
Hotels.com 19  
HouseTrip 20  
BedYCasa 21  
RoomKey 22

ThirdHome 23  
Expedia 24  
9Flats 25  
Priceline 26  
Orbitz 27  
Trivago 28  
LateRooms.com 29  
Hotwire 30  
Kayak 31  
Travelocity 32  
LastMinute.com 33  
Agoda 34  
Splendia 35  
*and many more...*

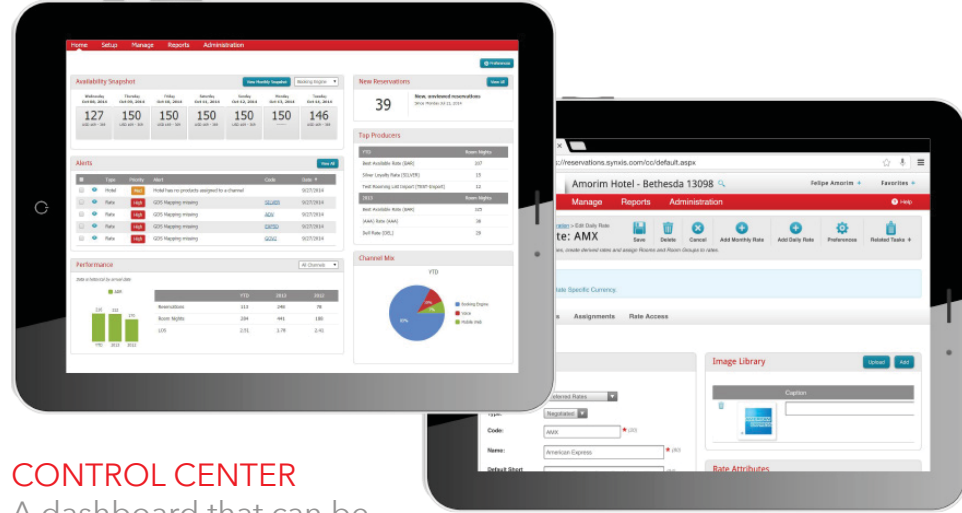


Your Legacy Reservations and rentals can all be controlled electronically utilizing our third party tools and a proprietary system Legacy Hotels and Resorts is developing. Whether you choose our hotel brand to give you seamless control without any hassle or chose to manage things yourself you are always in control from anywhere you are.

SIMPLE MATH AND TIMING  
THAT MAKE SENSE



**CHANNEL MANAGEMENT**  
Software allows all your reservation platforms to be up-to-date with all other reservations so you can avoid duplicate bookings and plan your perfect vacation when you want.



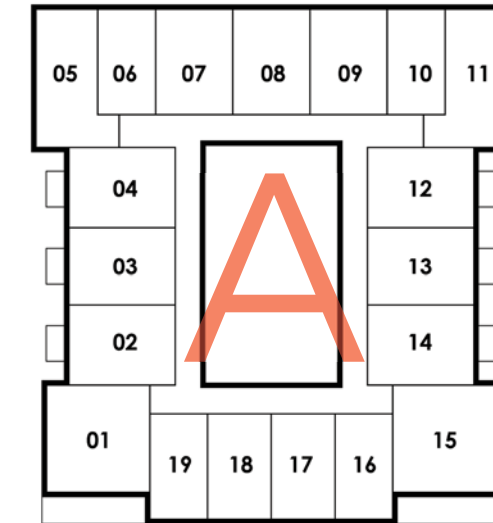
**CONTROL CENTER**  
A dashboard that can be viewed on your mobile devices to see your asset performance and revenue at any time.

**PRICE OPTIMIZATION**  
With algorithms designed to know when and where the best events in the world and in your city are happening you can count on pricing that reflects the supply and demand for your home - any day of the year.

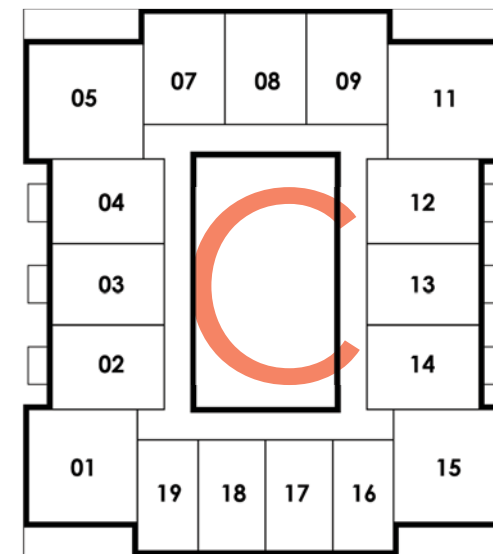




MICRO*LUXE*  
FLOOR PLANS



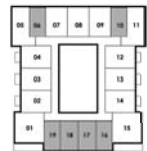
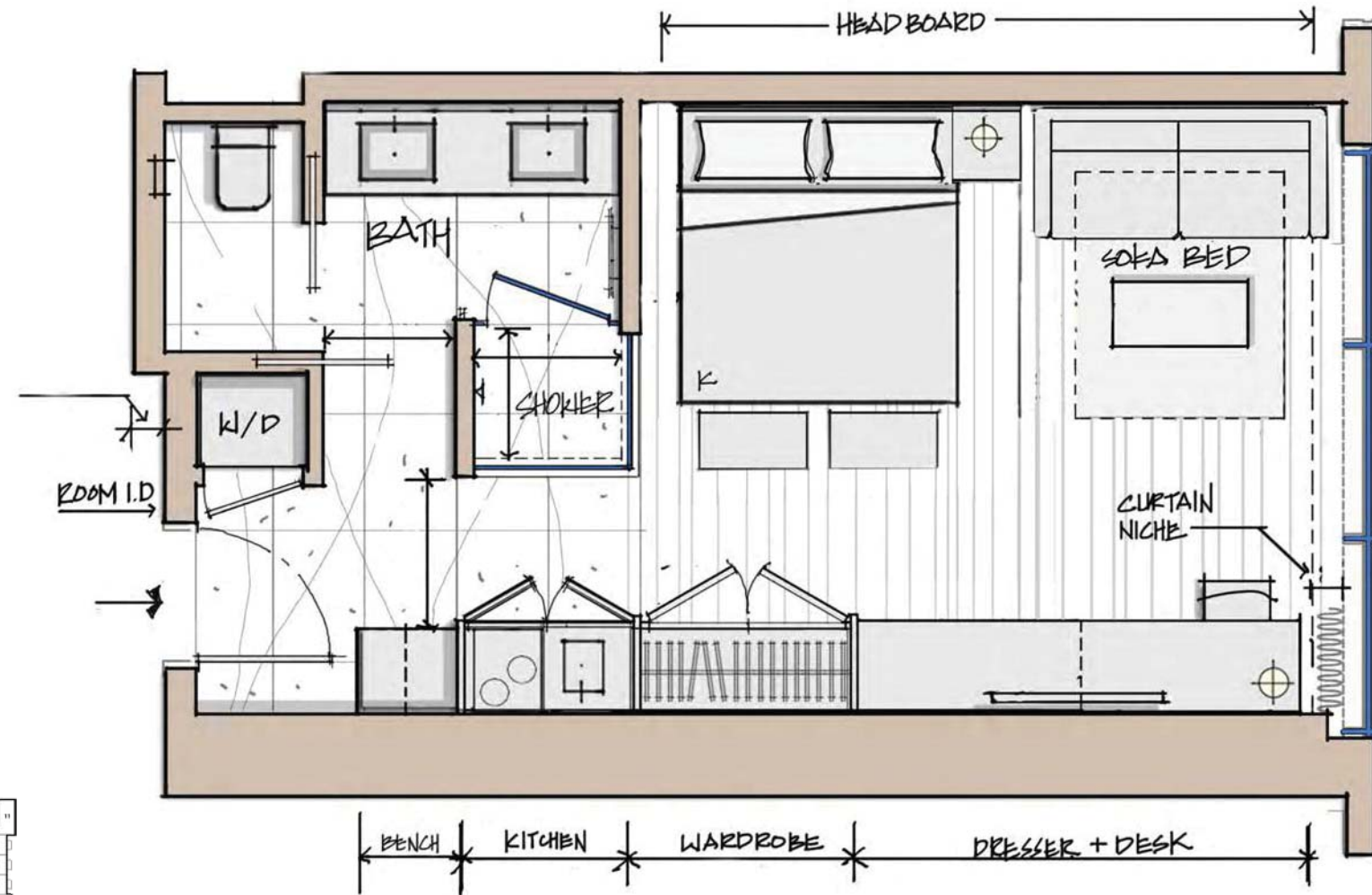
KEYPLATE A  
LEVELS: 28-31, 34-37



KEYPLATE C  
LEVELS: 26, 27, 32, 33, 38, 39

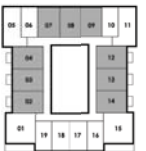
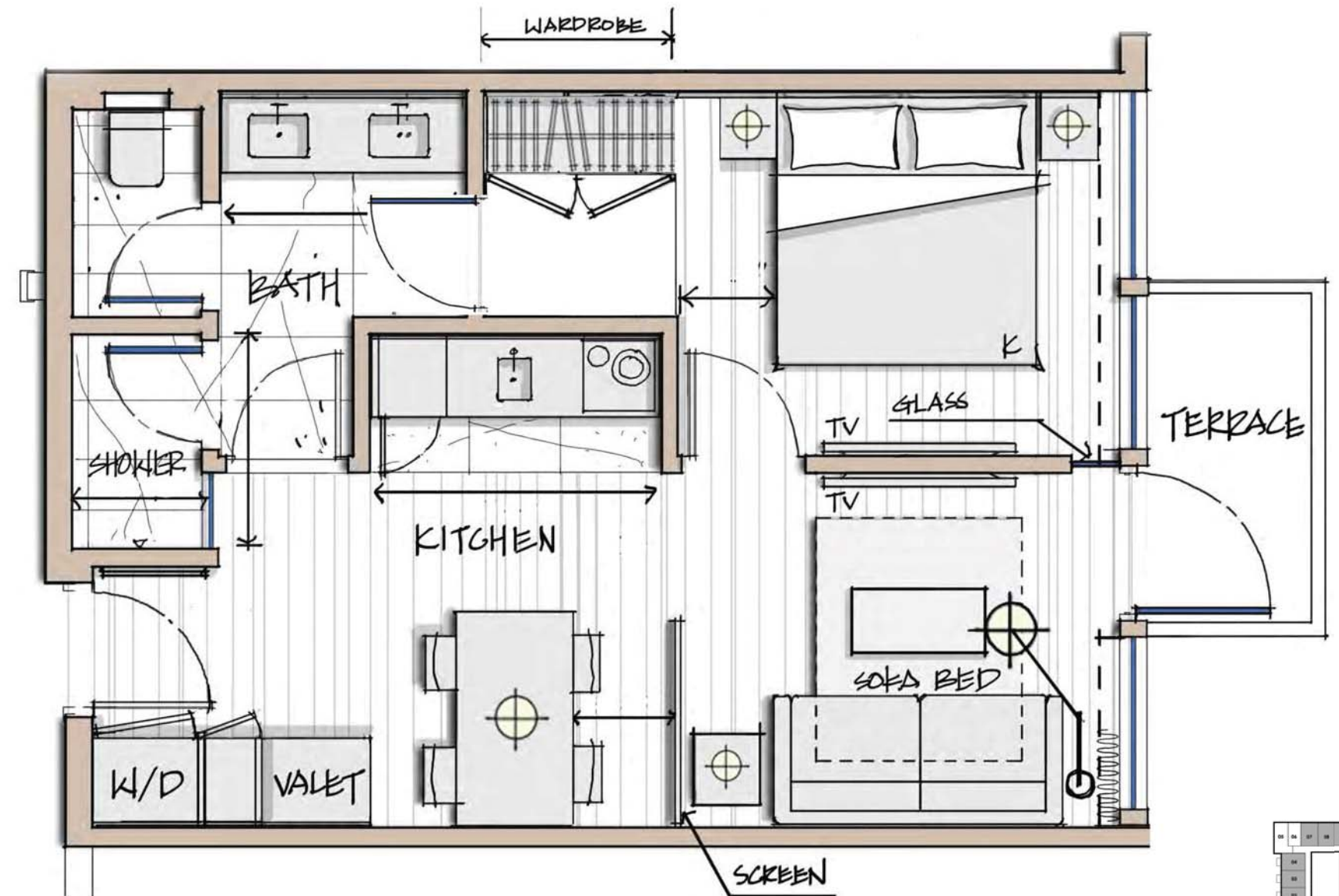


A  
362 SQ. FT. | 34 M<sup>2</sup>



THESE DRAWINGS ARE CONCEPTUAL ONLY AND ARE FOR THE CONVENIENCE OF REFERENCE. THEY SHOULD NOT BE RELIED UPON AS REPRESENTATIONS, EXPRESS OR IMPLIED, OF THE FINAL DETAIL OF THE RESIDENCES. UNITS SHOWN ARE EXAMPLES OF UNIT TYPES AND MAY NOT DEPICT ACTUAL UNITS. STATED SQUARE FOOTAGES ARE RANGES FOR A PARTICULAR UNIT TYPE AND ARE MEASURED TO THE EXTERIOR BOUNDARIES OF THE EXTERIOR WALLS AND THE CENTERLINE OF INTERIOR DEMISING WALLS AND IN FACT VARY FROM THE AREA THAT WOULD BE DETERMINED BY USING THE DESCRIPTION AND DEFINITION OF THE "UNIT" SET FORTH IN THE DECLARATION (WHICH GENERALLY ONLY INCLUDES THE INTERIOR AIRSPACE BETWEEN THE PERIMETER WALLS AND EXCLUDES INTERIOR STRUCTURAL COMPONENTS).

B1  
487 SQ. FT. | 45 M<sup>2</sup>

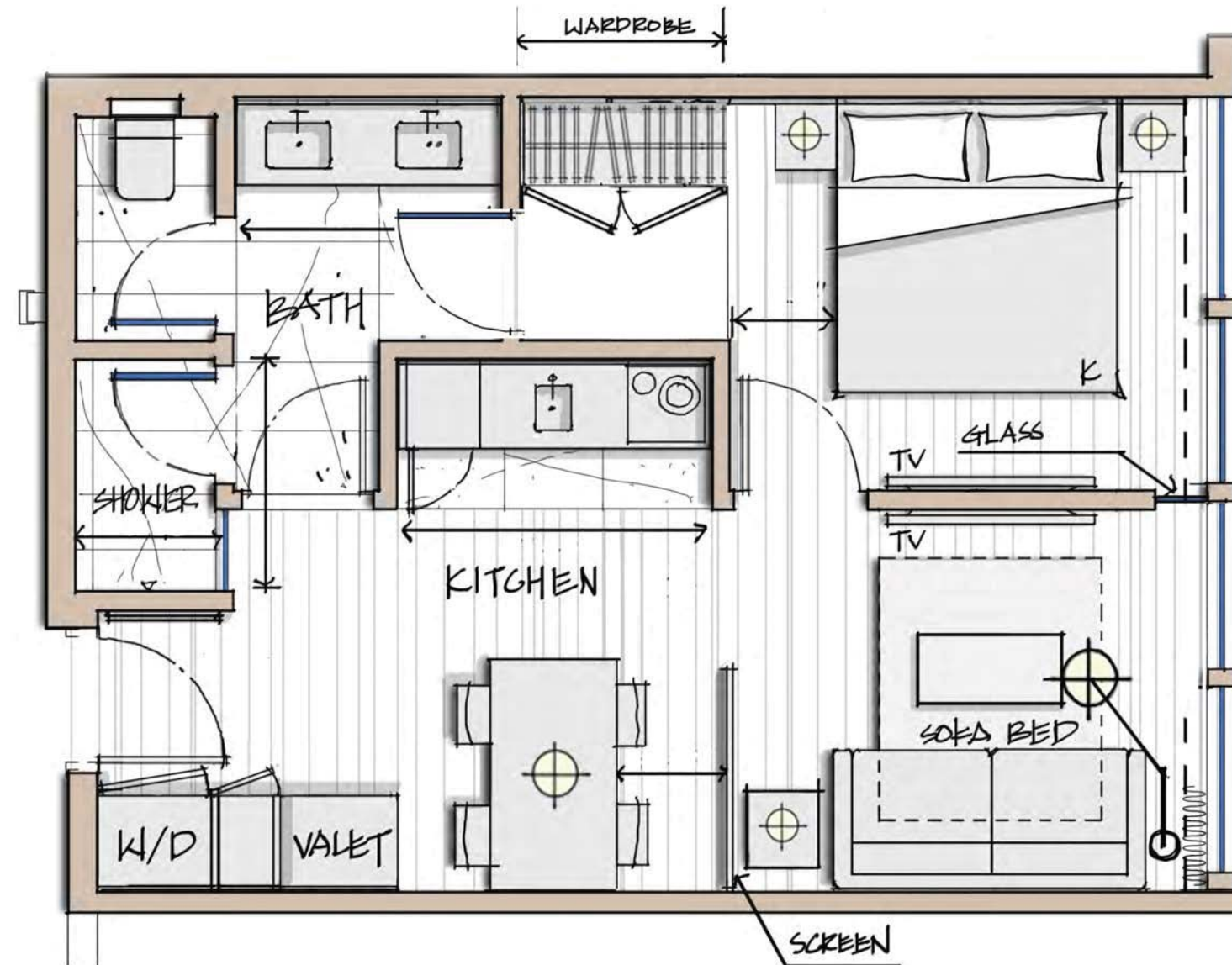


THESE DRAWINGS ARE CONCEPTUAL ONLY AND ARE FOR THE CONVENIENCE OF REFERENCE. THEY SHOULD NOT BE RELIED UPON AS REPRESENTATIONS, EXPRESS OR IMPLIED, OF THE FINAL DETAIL OF THE RESIDENCES. UNITS SHOWN ARE EXAMPLES OF UNIT TYPES AND MAY NOT DEPICT ACTUAL UNITS. STATED SQUARE FOOTAGES ARE RANGES FOR A PARTICULAR UNIT TYPE AND ARE MEASURED TO THE EXTERIOR BOUNDARIES OF THE EXTERIOR WALLS AND THE CENTERLINE OF INTERIOR DEMISING WALLS AND IN FACT VARY FROM THE AREA THAT WOULD BE DETERMINED BY USING THE DESCRIPTION AND DEFINITION OF THE "UNIT" SET FORTH IN THE DECLARATION (WHICH GENERALLY ONLY INCLUDES THE INTERIOR AIRSPACE BETWEEN THE PERIMETER WALLS AND EXCLUDES INTERIOR STRUCTURAL COMPONENTS).



B2

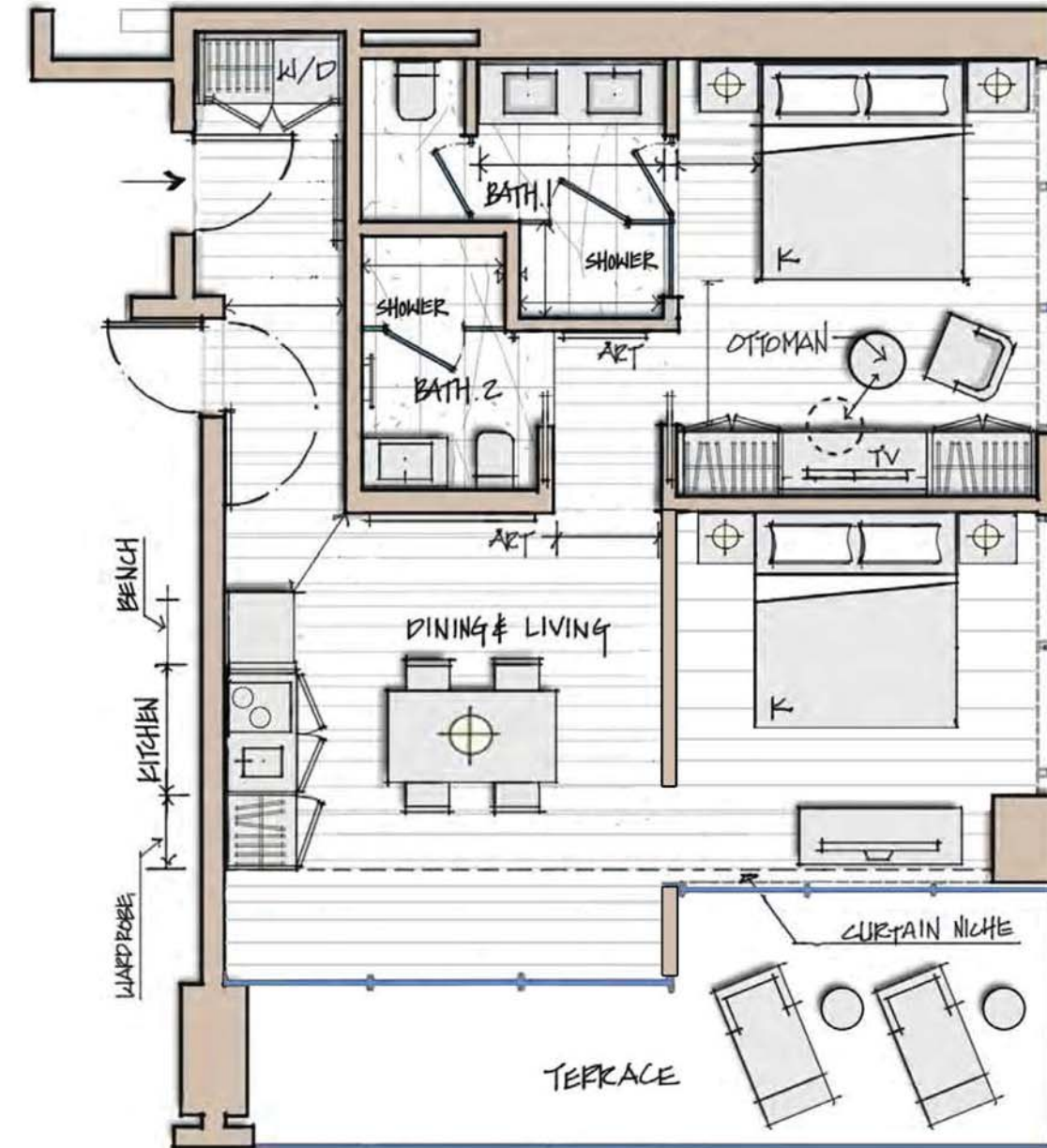
486 SQ. FT. | 45 M<sup>2</sup>



THESE DRAWINGS ARE CONCEPTUAL ONLY AND ARE FOR THE CONVENIENCE OF REFERENCE. THEY SHOULD NOT BE RELIED UPON AS REPRESENTATIONS, EXPRESS OR IMPLIED, OF THE FINAL DETAIL OF THE RESIDENCES. UNITS SHOWN ARE EXAMPLES OF UNIT TYPES AND MAY NOT DEPICT ACTUAL UNITS. STATED SQUARE FOOTAGES ARE RANGES FOR A PARTICULAR UNIT TYPE AND ARE MEASURED TO THE EXTERIOR BOUNDARIES OF THE EXTERIOR WALLS AND THE CENTERLINE OF INTERIOR DEMISING WALLS AND IN FACT VARY FROM THE AREA THAT WOULD BE DETERMINED BY USING THE DESCRIPTION AND DEFINITION OF THE "UNIT" SET FORTH IN THE DECLARATION (WHICH GENERALLY ONLY INCLUDES THE INTERIOR AIRSPACE BETWEEN THE PERIMETER WALLS AND EXCLUDES INTERIOR STRUCTURAL COMPONENTS).

C

686 - 786 SQ. FT. | 63 - 73 M<sup>2</sup>

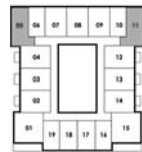
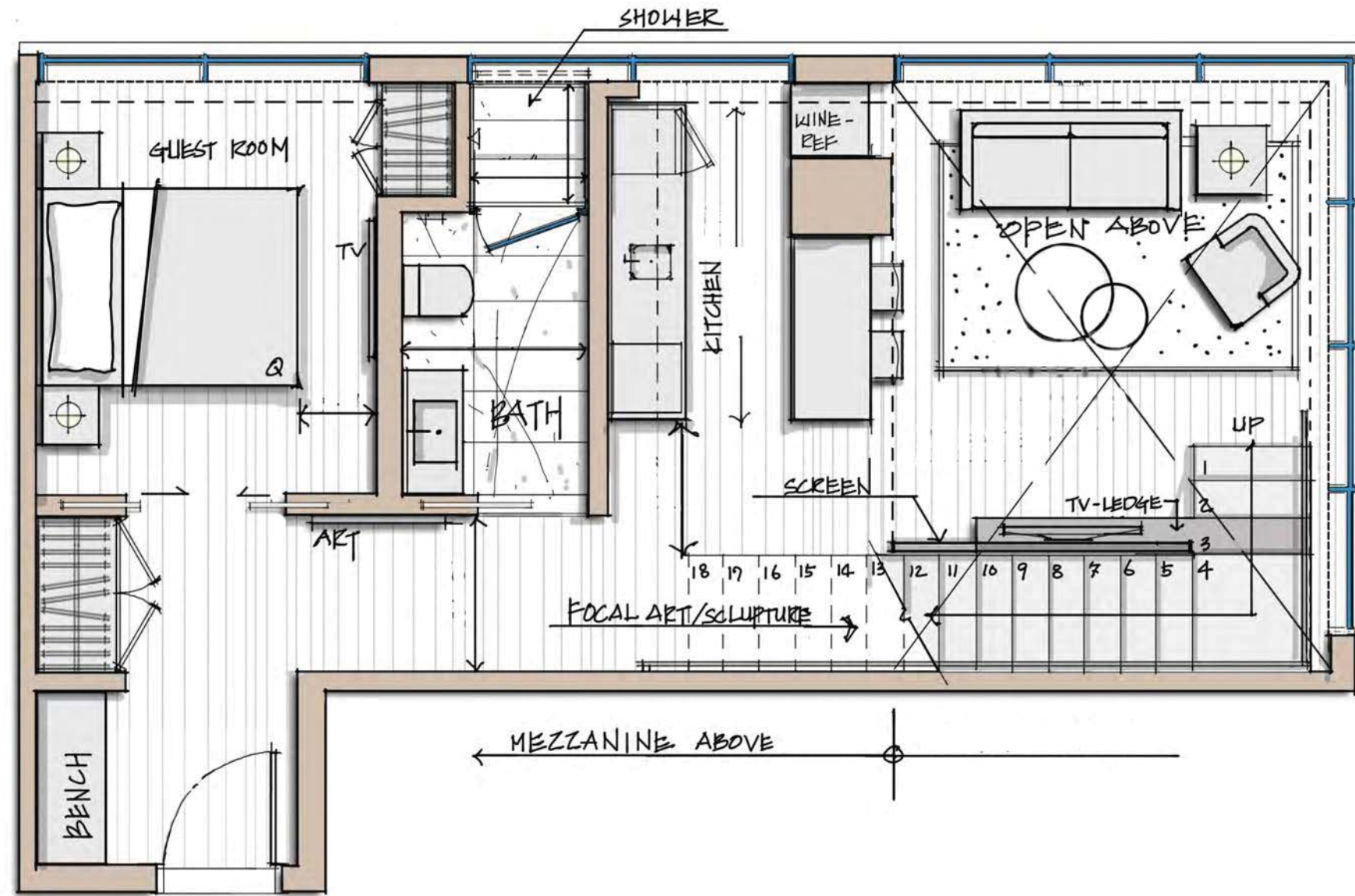


THESE DRAWINGS ARE CONCEPTUAL ONLY AND ARE FOR THE CONVENIENCE OF REFERENCE. THEY SHOULD NOT BE RELIED UPON AS REPRESENTATIONS, EXPRESS OR IMPLIED, OF THE FINAL DETAIL OF THE RESIDENCES. UNITS SHOWN ARE EXAMPLES OF UNIT TYPES AND MAY NOT DEPICT ACTUAL UNITS. STATED SQUARE FOOTAGES ARE RANGES FOR A PARTICULAR UNIT TYPE AND ARE MEASURED TO THE EXTERIOR BOUNDARIES OF THE EXTERIOR WALLS AND THE CENTERLINE OF INTERIOR DEMISING WALLS AND IN FACT VARY FROM THE AREA THAT WOULD BE DETERMINED BY USING THE DESCRIPTION AND DEFINITION OF THE "UNIT" SET FORTH IN THE DECLARATION (WHICH GENERALLY ONLY INCLUDES THE INTERIOR AIRSPACE BETWEEN THE PERIMETER WALLS AND EXCLUDES INTERIOR STRUCTURAL COMPONENTS).



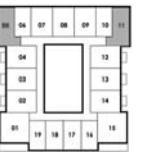
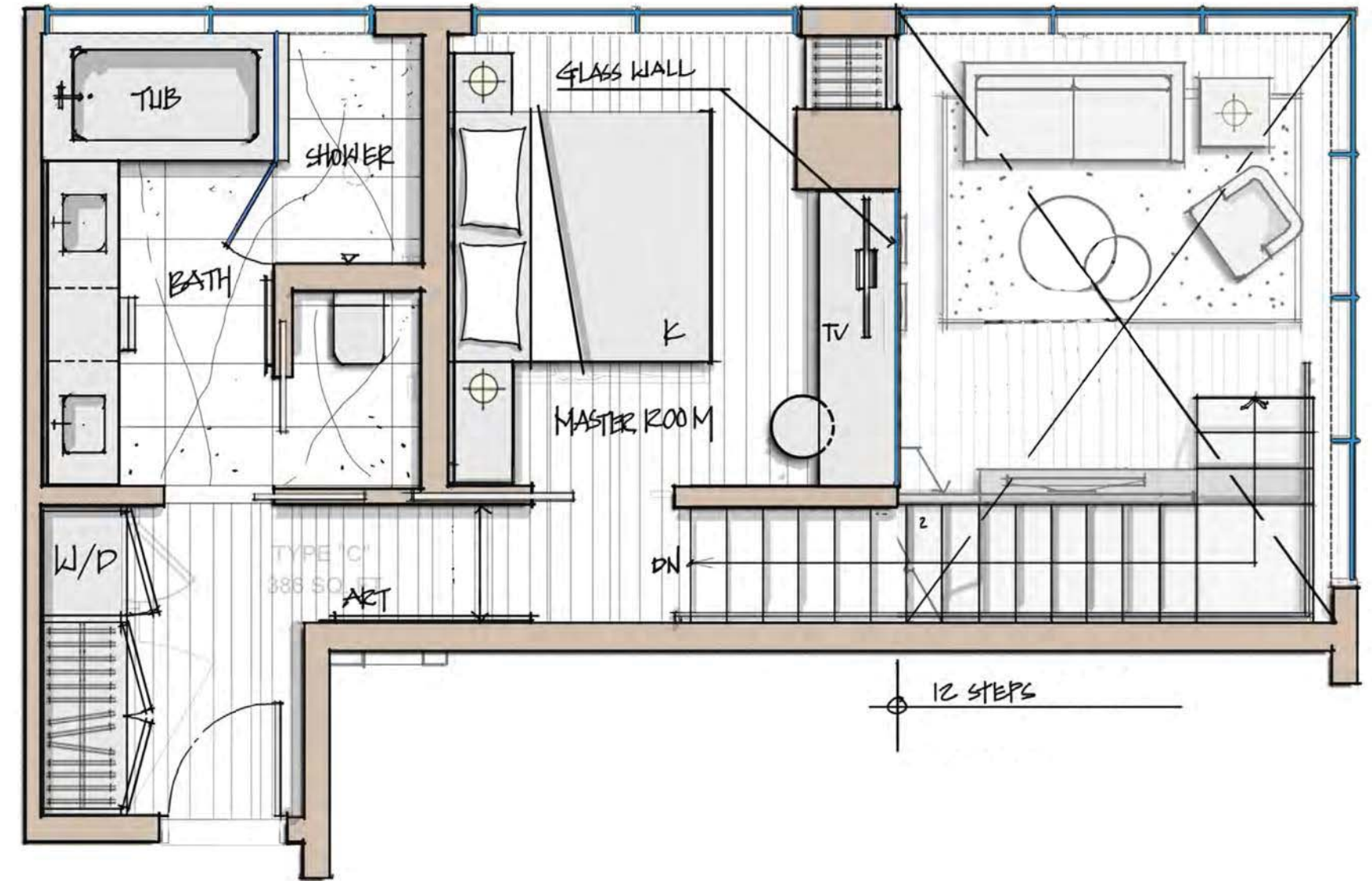
# D - LOWER

950 SQ. FT. | 88 M<sup>2</sup>



THESE DRAWINGS ARE CONCEPTUAL ONLY AND ARE FOR THE CONVENIENCE OF REFERENCE. THEY SHOULD NOT BE RELIED UPON AS REPRESENTATIONS, EXPRESS OR IMPLIED, OF THE FINAL DETAIL OF THE RESIDENCES. UNITS SHOWN ARE EXAMPLES OF UNIT TYPES AND MAY NOT DEPICT ACTUAL UNITS. STATED SQUARE FOOTAGES ARE RANGES FOR A PARTICULAR UNIT TYPE AND ARE MEASURED TO THE EXTERIOR BOUNDARIES OF THE EXTERIOR WALLS AND THE CENTERLINE OF INTERIOR DEMISING WALLS AND IN FACT VARY FROM THE AREA THAT WOULD BE DETERMINED BY USING THE DESCRIPTION AND DEFINITION OF THE "UNIT" SET FORTH IN THE DECLARATION (WHICH GENERALLY ONLY INCLUDES THE INTERIOR AIRSPACE BETWEEN THE PERIMETER WALLS AND EXCLUDES INTERIOR STRUCTURAL COMPONENTS).

# D - UPPER



THESE DRAWINGS ARE CONCEPTUAL ONLY AND ARE FOR THE CONVENIENCE OF REFERENCE. THEY SHOULD NOT BE RELIED UPON AS REPRESENTATIONS, EXPRESS OR IMPLIED, OF THE FINAL DETAIL OF THE RESIDENCES. UNITS SHOWN ARE EXAMPLES OF UNIT TYPES AND MAY NOT DEPICT ACTUAL UNITS. STATED SQUARE FOOTAGES ARE RANGES FOR A PARTICULAR UNIT TYPE AND ARE MEASURED TO THE EXTERIOR BOUNDARIES OF THE EXTERIOR WALLS AND THE CENTERLINE OF INTERIOR DEMISING WALLS AND IN FACT VARY FROM THE AREA THAT WOULD BE DETERMINED BY USING THE DESCRIPTION AND DEFINITION OF THE "UNIT" SET FORTH IN THE DECLARATION (WHICH GENERALLY ONLY INCLUDES THE INTERIOR AIRSPACE BETWEEN THE PERIMETER WALLS AND EXCLUDES INTERIOR STRUCTURAL COMPONENTS).