

14
ROC
MIAMI

MIAMI CONDO LIFESTYLE



283 RESIDENCES

32 STORIES

STUDIO

1 BEDROOM

1 BEDROOM WITH HOME OFFICE

2 BEDROOM

10 FT CEILINGS

MIAMI CONDO LIFESTYLE

LOCATION. LOCATION.
TIMING.

MIAMI CONDO LIFESTYLE



MIAMI CONDO LIFESTYLE

BUILDING THE FUTURE TODAY.

14 ROC IS SURROUNDED BY AN ASTOUNDING AMOUNT OF PRIVATE AND PUBLIC INVESTMENT THAT IS ACTIVELY TRANSFORMING MIAMI’S URBAN CORE.

\$840 MILLION

Signature Bridge & the Underdeck

\$6 BILLION

Miami Worldcenter, the second largest urban

\$70 NEW MILLION

Tri-rail expansion on the



8 MILLION

Projected Brightline riders

7.2 MILLION

At PortMiami

1.4 MILLION

At Kaseya Center

THE SIGNATURE BRIDGE AND UNDERDECK
DESIGNS ARE INSPIRED BY URBAN
DEVELOPMENTS AROUND THE WORLD
THAT HAVE TRANSFORMED CITY LIVING.



INSPIRED BY NATURE,
INFUSED WITH ELEGANCE.



Innovative architecture meets urban connectivity in downtown Miami.



MIAMI CONDO LIFESTYLE

SEE LEGAL DISCLAIMER ON THE FINAL PAGE

A TEAM OF VISIONARIES

MIAMI CONDO LIFESTYLE



14TH STREET

MIAMI DEVELOPERS, LLC

DEVELOPED BY
14TH STREET MIAMI
DEVELOPERS, LLC

MIAMI CONDO LIFESTYLE



RSP

ARCHITECTURE BY RSP ARCHITECTS

MIAMI CONDO LIFESTYLE



M | A | W | D

INTERIOR DESIGN BY MARCH AND WHITE DESIGN



MIAMI CONDO LIFESTYLE



MIAMI CONDO LIFESTYLE

AMENITIES

MIAMI CONDO LIFESTYLE



MIAMI CONDO LIFESTYLE



MIAMI CONDO LIFESTYLE

SEE LEGAL DISCLAIMER ON THE FINAL PAGE



MIAMI CONDO LIFESTYLE



MIAMI CONDO LIFESTYLE



MIAMI CONDO LIFESTYLE

SEE LEGAL DISCLAIMER ON THE FINAL PAGE

ARTIST CONCEPT

A SOLID FOUNDATION FOR MODERN LIVING.

14 ROC's architecture features a grounding, organic rock-like form at the tower's base, and its interior design, by world-renowned March and White Design, is inspired by Miami's natural elements.

MIAMI CONDO LIFESTYLE



WELCOME
HOME.

MIAMI CONDO LIFESTYLE





MIAMI CONDO LIFESTYLE

14 ROC MIAMI



MIAMI CONDO LIFESTYLE

ORAL REPRESENTATIONS CANNOT BE RELIED UPON AS CORRECTLY STATING THE REPRESENTATIONS OF THE DEVELOPER. FOR CORRECT REPRESENTATIONS, MAKE REFERENCE TO THIS BROCHURE AND TO THE DOCUMENTS REQUIRED BY SECTION 718.503, FLORIDA STATUTES, TO BE FURNISHED BY A DEVELOPER TO A BUYER OR LESSEE. This is not intended to be an offer to sell, or solicitation to buy, condominium units to residents of any jurisdiction where prohibited by law, and your eligibility for purchase will depend upon your state of residency. Stated dimensions are measured to the exterior boundaries of the exterior walls and the centerline of interior demising walls and in fact vary from the dimensions that would be determined by using the description and definition of the "Unit" set forth in the Declaration (which generally only includes the interior airspace between the perimeter walls and excludes interior structural components). For your reference, the area of the Unit, determined in accordance with those defined unit boundaries, is set forth on Exhibit 3 to the Declaration. Note that measurements of rooms set forth on this floor plan are generally taken at the greatest points of each given room (as if the room were a perfect rectangle), without regard for any cutouts. Accordingly, the area of the actual room will typically be smaller than the product obtained by multiplying the stated length times width. All dimensions are approximate and may vary with actual construction, and all floor plans and development plans are subject to change.

RESIDENCE A1

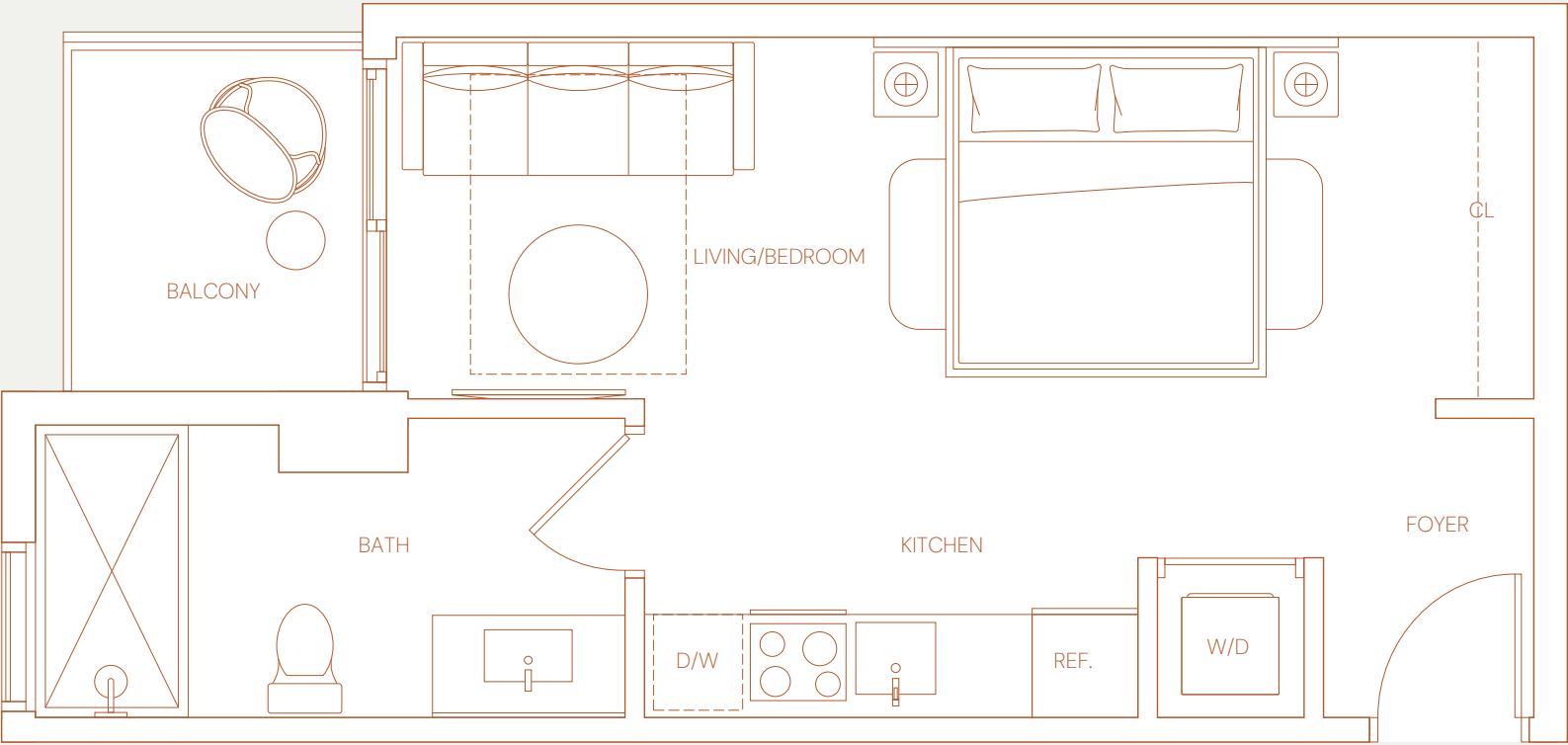
LINE 09

STUDIO
1 BATHROOM

INTERIOR
418 SQ. FT.

BALCONY
43 SQ. FT.

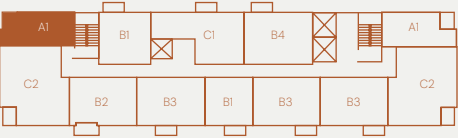
TOTAL
461 SQ. FT.



NORTH



SOUTH



125 NE 14TH STREET, MIAMI, FL. 33132 | 14ROC.COM | +1 786 475 5539

14TH STREET
MIAMI DEVELOPERS, LLC

ORAL REPRESENTATIONS CANNOT BE RELIED UPON AS CORRECTLY STATING THE REPRESENTATION OF ANY JURISDICTION WHERE PROHIBITED BY LAW, AND YOUR ELIGIBILITY FOR PURCHASE WILL DEPEND UPON YOUR STATE OF RESIDENCE (WHICH GENERALLY ONLY INCLUDES THE INTERIOR AIRSPACE BETWEEN THE PERIMETER WALLS AND EXCLUDES EXTERIOR STRUCTURAL COMPONENTS). FOR YOUR REFERENCE, THE AREA OF THE UNIT, DETERMINED IN ACCORDANCE WITH THOSE DEFINED IN THE DECLARATION (WHICH GENERALLY ONLY INCLUDES THE INTERIOR AIRSPACE BETWEEN THE PERIMETER WALLS AND EXCLUDES EXTERIOR STRUCTURAL COMPONENTS). ACCORDINGLY, THE AREA OF THE ACTUAL ROOM WILL TYPICALLY BE SMALLER THAN THE PRODUCT OBTAINED BY MULTIPLYING THE STATED LENGTH TIMES WIDTH. ALL DIMENSIONS ARE APPROXIMATE AND MAY VARY WITH ACTUAL CONSTRUCTION, AND ALL FLOOR PLANS ARE FOR ILLUSTRATION PURPOSES ONLY.



BUYER OR LESSEE. THIS IS NOT INTENDED TO BE AN OFFER TO SELL, OR SOLICITATION TO BUY, CONDOMINIUM UNITS TO RESIDENTS IN THE DECLARATION (WHICH GENERALLY ONLY INCLUDES THE INTERIOR AIRSPACE BETWEEN THE PERIMETER WALLS AND EXCLUDES EXTERIOR STRUCTURAL COMPONENTS). ACCORDINGLY, THE AREA OF THE ACTUAL ROOM WILL TYPICALLY BE SMALLER THAN THE PRODUCT OBTAINED BY MULTIPLYING THE STATED LENGTH TIMES WIDTH. ALL DIMENSIONS ARE APPROXIMATE AND MAY VARY WITH ACTUAL CONSTRUCTION, AND ALL FLOOR PLANS ARE FOR ILLUSTRATION PURPOSES ONLY.

RESIDENCE A1

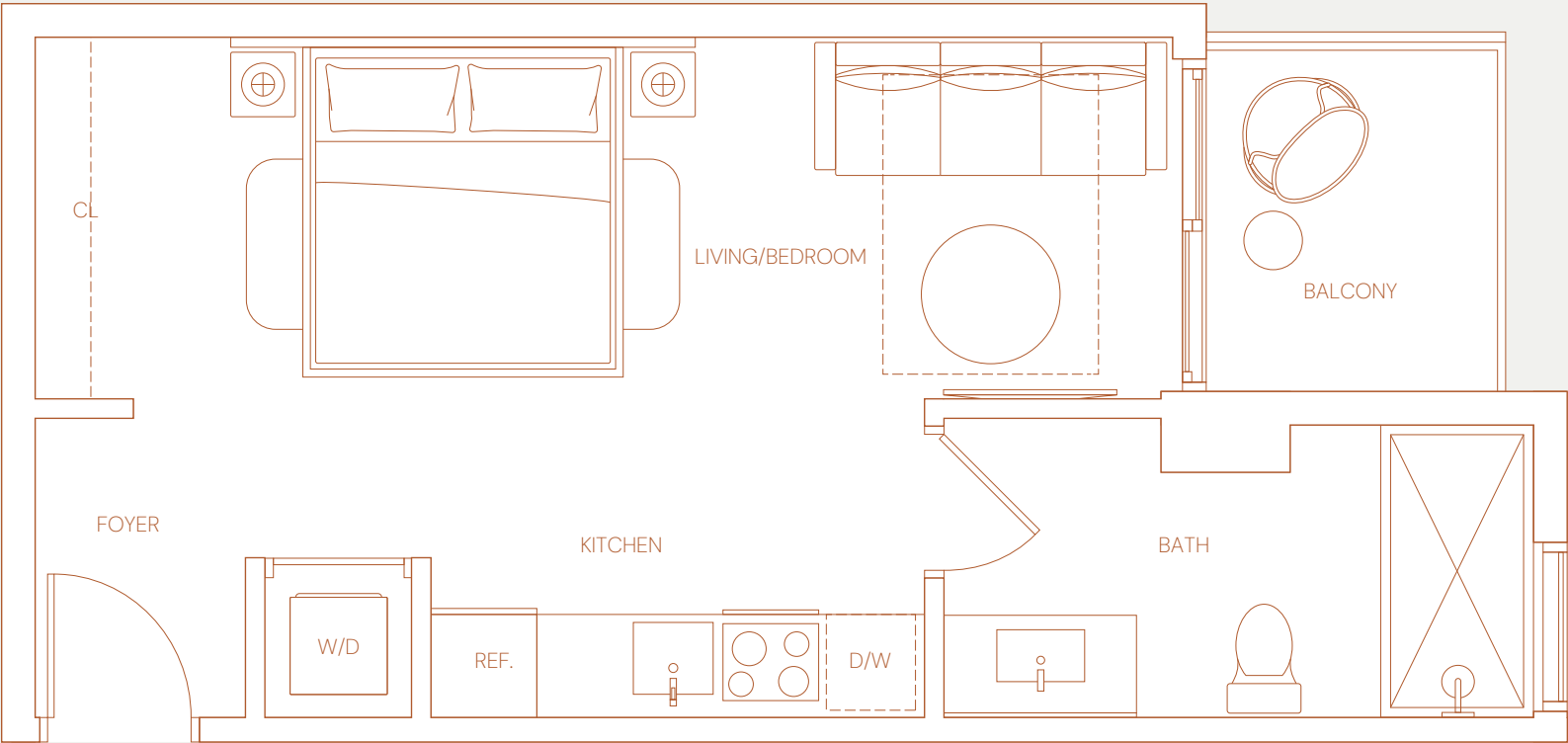
LINE 01

STUDIO
1 BATHROOM

INTERIOR
418 SQ. FT.

BALCONY
42 SQ. FT.

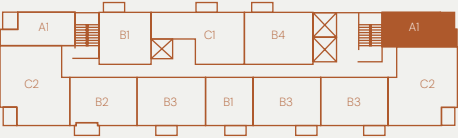
TOTAL
460 SQ. FT.



NORTH



SOUTH



125 NE 14TH STREET, MIAMI, FL. 33132 | 14ROC.COM | +1 786 475 5539

14TH STREET
MIAMI DEVELOPERS, LLC

ORAL REPRESENTATIONS CANNOT BE RELIED UPON AS CORRECTLY STATING THE REPRESENTATION OF ANY JURISDICTION WHERE PROHIBITED BY LAW, AND YOUR ELIGIBILITY FOR PURCHASE WILL DEPEND UPON YOUR STATE OF RESIDENCE (WHICH GENERALLY ONLY INCLUDES THE INTERIOR AIRSPACE BETWEEN THE PERIMETER WALLS AND EXCLUDES EXTERIOR STRUCTURAL COMPONENTS). FOR YOUR REFERENCE, THE AREA OF THE UNIT, DETERMINED IN ACCORDANCE WITH THOSE DEFINITIONS, IS 460 SQ. FT. ACCORDINGLY, THE AREA OF THE ACTUAL ROOM WILL TYPICALLY BE SMALLER THAN THE PRODUCT OBTAINED BY MULTIPLYING THE STATED LENGTH TIMES WIDTH. ALL DIMENSIONS ARE APPROXIMATE AND MAY VARY WITH ACTUAL CONSTRUCTION, AND ALL FLOOR PLANS ARE FOR ILLUSTRATION PURPOSES ONLY.



BUYER OR LESSEE. THIS IS NOT INTENDED TO BE AN OFFER TO SELL, OR SOLICITATION TO BUY, CONDOMINIUM UNITS TO RESIDENTS OF ANY JURISDICTION WHERE PROHIBITED BY LAW, AND YOUR ELIGIBILITY FOR PURCHASE WILL DEPEND UPON YOUR STATE OF RESIDENCE (WHICH GENERALLY ONLY INCLUDES THE INTERIOR AIRSPACE BETWEEN THE PERIMETER WALLS AND EXCLUDES EXTERIOR STRUCTURAL COMPONENTS). FOR YOUR REFERENCE, THE AREA OF THE UNIT, DETERMINED IN ACCORDANCE WITH THOSE DEFINITIONS, IS 460 SQ. FT. ACCORDINGLY, THE AREA OF THE ACTUAL ROOM WILL TYPICALLY BE SMALLER THAN THE PRODUCT OBTAINED BY MULTIPLYING THE STATED LENGTH TIMES WIDTH. ALL DIMENSIONS ARE APPROXIMATE AND MAY VARY WITH ACTUAL CONSTRUCTION, AND ALL FLOOR PLANS ARE FOR ILLUSTRATION PURPOSES ONLY.

RESIDENCE B1

LINE 05

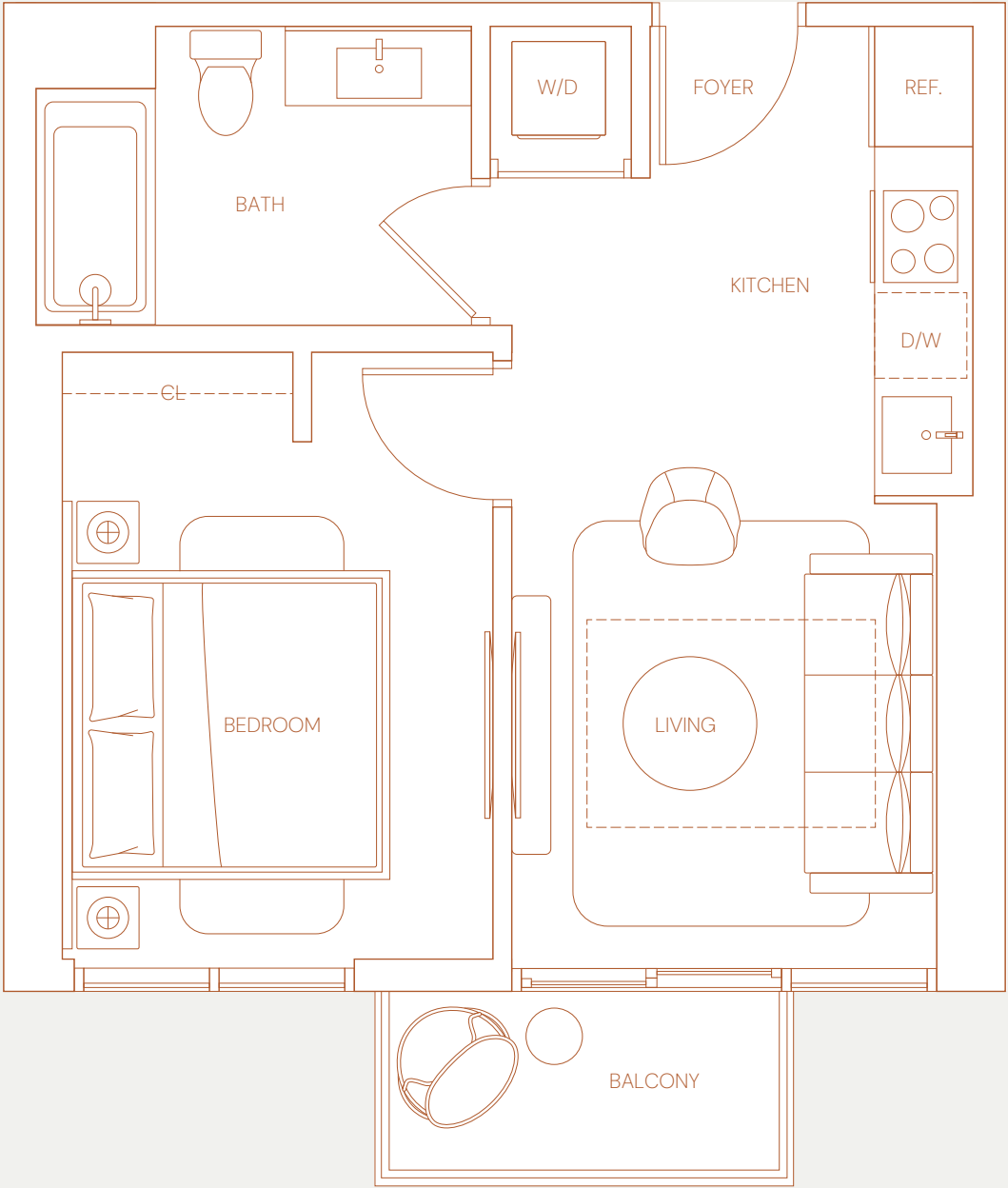
1 BEDROOM
1 BATHROOM

INTERIOR
436 SQ. FT.

BALCONY
36 SQ. FT.

TOTAL
472 SQ. FT.

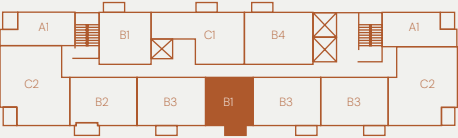
14
ROC
MIAMI



NORTH



SOUTH



125 NE 14TH STREET, MIAMI, FL. 33132 | 14ROC.COM | +1 786 475 5539

14TH STREET
MIAMI DEVELOPERS, LLC

ORAL REPRESENTATIONS CANNOT BE RELIED UPON AS CORRECTLY STATING THE REPRESENTATION OF ANY JURISDICTION WHERE PROHIBITED BY LAW, AND YOUR ELIGIBILITY FOR PURCHASE WILL DEPEND UPON YOUR STATE OF RESIDENCE (WHICH GENERALLY ONLY INCLUDES THE INTERIOR AIRSPACE BETWEEN THE PERIMETER WALLS AND EXCLUDES EXTERIOR STRUCTURAL COMPONENTS). FOR YOUR REFERENCE, THE AREA OF THE UNIT, DETERMINED IN ACCORDANCE WITH THOSE DEFINED IN THE DECLARATION (WHICH GENERALLY ONLY INCLUDES THE INTERIOR AIRSPACE BETWEEN THE PERIMETER WALLS AND EXCLUDES EXTERIOR STRUCTURAL COMPONENTS). ACCORDINGLY, THE AREA OF THE ACTUAL ROOM WILL TYPICALLY BE SMALLER THAN THE PRODUCT OBTAINED BY MULTIPLYING THE STATED LENGTH TIMES WIDTH. ALL DIMENSIONS ARE APPROXIMATE AND MAY VARY WITH ACTUAL CONSTRUCTION, AND ALL FLOOR PLANS ARE FOR ILLUSTRATION PURPOSES ONLY.



BUYER OR LESSEE. THIS IS NOT INTENDED TO BE AN OFFER TO SELL, OR SOLICITATION TO BUY, CONDOMINIUM UNITS TO RESIDENTS OF ANY JURISDICTION WHERE PROHIBITED BY LAW, AND YOUR ELIGIBILITY FOR PURCHASE WILL DEPEND UPON YOUR STATE OF RESIDENCE (WHICH GENERALLY ONLY INCLUDES THE INTERIOR AIRSPACE BETWEEN THE PERIMETER WALLS AND EXCLUDES EXTERIOR STRUCTURAL COMPONENTS). ACCORDINGLY, THE AREA OF THE ACTUAL ROOM WILL TYPICALLY BE SMALLER THAN THE PRODUCT OBTAINED BY MULTIPLYING THE STATED LENGTH TIMES WIDTH. ALL DIMENSIONS ARE APPROXIMATE AND MAY VARY WITH ACTUAL CONSTRUCTION, AND ALL FLOOR PLANS ARE FOR ILLUSTRATION PURPOSES ONLY.

RESIDENCE B1

LINE 10

1 BEDROOM
1 BATHROOM

INTERIOR
487 SQ. FT.

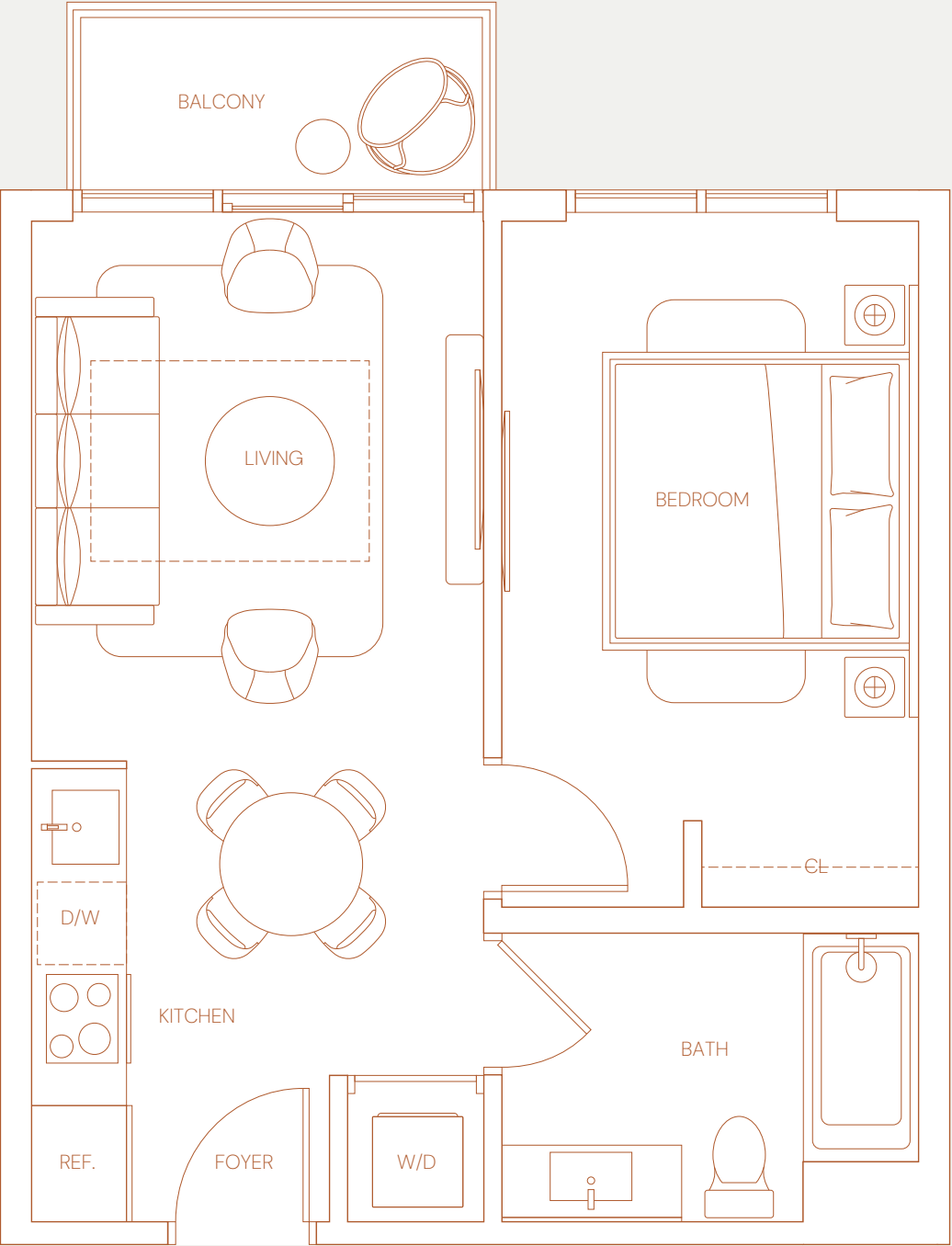
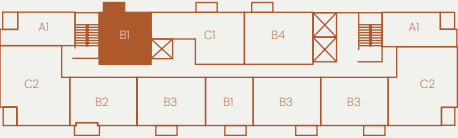
BALCONY
33 SQ. FT.

TOTAL
520 SQ. FT.

NORTH



SOUTH



14
ROC
MIAMI

125 NE 14TH STREET, MIAMI, FL. 33132 | 14ROC.COM | +1 786 475 5539

14TH STREET
MIAMI DEVELOPERS, LLC

ORAL REPRESENTATIONS CANNOT BE RELIED UPON AS CORRECTLY STATING THE REPRESENTATION OF ANY JURISDICTION WHERE PROHIBITED BY LAW, AND YOUR ELIGIBILITY FOR PURCHASE WILL DEPEND UPON YOUR STATE OF RESIDENCE (THIS IS NOT AN OFFER TO SELL, OR SOLICITATION TO BUY, CONDOMINIUM UNITS TO RESIDENTS IN THE DECLARATION (WHICH GENERALLY ONLY INCLUDES THE INTERIOR AIRSPACE BETWEEN THE PERIMETER WALLS AND EXCLUDES OUTSIDE AREAS). ACCORDINGLY, THE AREA OF THE ACTUAL ROOM WILL TYPICALLY BE SMALLER THAN THE PRODUCT OBTAINED BY MULTIPLYING THE STATED LENGTH TIMES WIDTH. ALL DIMENSIONS ARE APPROXIMATE AND MAY VARY WITH ACTUAL CONSTRUCTION, AND ALL FLOOR PLANS ARE FOR INFORMATIONAL PURPOSES ONLY.

MIAMI CONDO LIFESTYLE

BUYER OR LESSEE. THIS IS NOT INTENDED TO BE AN OFFER TO SELL, OR SOLICITATION TO BUY, CONDOMINIUM UNITS TO RESIDENTS IN THE DECLARATION (WHICH GENERALLY ONLY INCLUDES THE INTERIOR AIRSPACE BETWEEN THE PERIMETER WALLS AND EXCLUDES OUTSIDE AREAS). ACCORDINGLY, THE AREA OF THE ACTUAL ROOM WILL TYPICALLY BE SMALLER THAN THE PRODUCT OBTAINED BY MULTIPLYING THE STATED LENGTH TIMES WIDTH. ALL DIMENSIONS ARE APPROXIMATE AND MAY VARY WITH ACTUAL CONSTRUCTION, AND ALL FLOOR PLANS ARE FOR INFORMATIONAL PURPOSES ONLY.

RESIDENCE B2

LINE 07

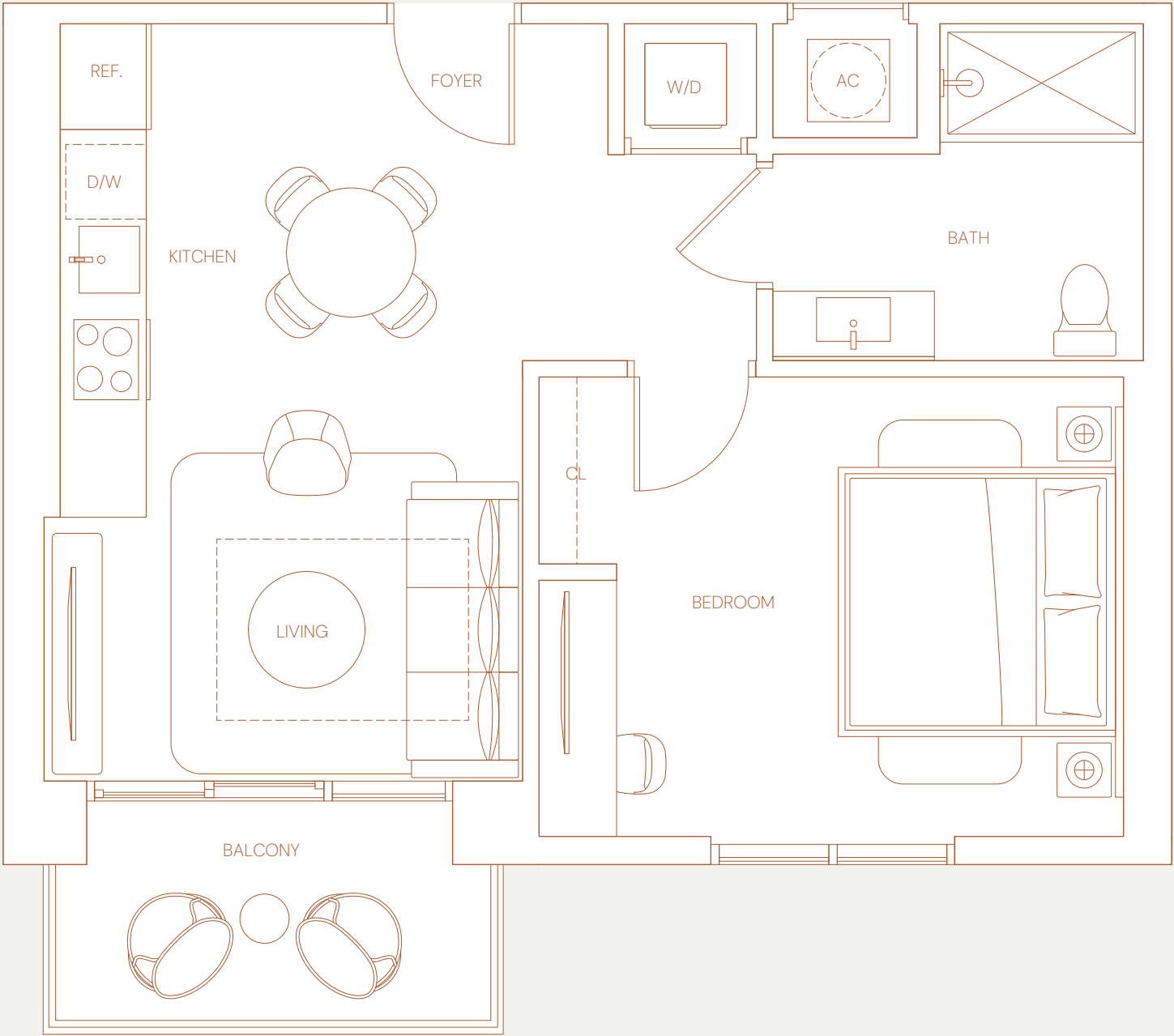
1 BEDROOM
1 BATHROOM

INTERIOR
587 SQ. FT.

BALCONY
58 SQ. FT.

TOTAL
645 SQ. FT.

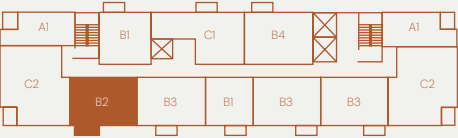
14
ROC
MIAMI



NORTH



SOUTH



125 NE 14TH STREET, MIAMI, FL. 33132 | 14ROC.COM | +1 786 475 5539

14TH STREET
MIAMI DEVELOPERS, LLC

ORAL REPRESENTATIONS CANNOT BE RELIED UPON AS CORRECTLY STATING THE REPRESENTATION OF ANY JURISDICTION WHERE PROHIBITED BY LAW, AND YOUR ELIGIBILITY FOR PURCHASE WILL DEPEND UPON YOUR STATE OF RESIDENCE (WHICH GENERALLY ONLY INCLUDES THE INTERIOR AIRSPACE BETWEEN THE PERIMETER WALLS AND EXCLUDES EXTERIOR STRUCTURAL COMPONENTS). FOR YOUR REFERENCE, THE AREA OF THE UNIT, DETERMINED IN ACCORDANCE WITH THOSE DEFINED IN THE DECLARATION (WHICH GENERALLY ONLY INCLUDES THE INTERIOR AIRSPACE BETWEEN THE PERIMETER WALLS AND EXCLUDES EXTERIOR STRUCTURAL COMPONENTS). ACCORDINGLY, THE AREA OF THE ACTUAL ROOM WILL TYPICALLY BE SMALLER THAN THE PRODUCT OBTAINED BY MULTIPLYING THE STATED LENGTH TIMES WIDTH. ALL DIMENSIONS ARE APPROXIMATE AND MAY VARY WITH ACTUAL CONSTRUCTION, AND ALL FLOOR PLANS ARE FOR INFORMATIONAL PURPOSES ONLY.



BUYER OR LESSEE. THIS IS NOT INTENDED TO BE AN OFFER TO SELL, OR SOLICITATION TO BUY, CONDOMINIUM UNITS TO RESIDENTS OF ANY JURISDICTION WHERE PROHIBITED BY LAW, AND YOUR ELIGIBILITY FOR PURCHASE WILL DEPEND UPON YOUR STATE OF RESIDENCE (WHICH GENERALLY ONLY INCLUDES THE INTERIOR AIRSPACE BETWEEN THE PERIMETER WALLS AND EXCLUDES EXTERIOR STRUCTURAL COMPONENTS). ACCORDINGLY, THE AREA OF THE ACTUAL ROOM WILL TYPICALLY BE SMALLER THAN THE PRODUCT OBTAINED BY MULTIPLYING THE STATED LENGTH TIMES WIDTH. ALL DIMENSIONS ARE APPROXIMATE AND MAY VARY WITH ACTUAL CONSTRUCTION, AND ALL FLOOR PLANS ARE FOR INFORMATIONAL PURPOSES ONLY.

RESIDENCE B3

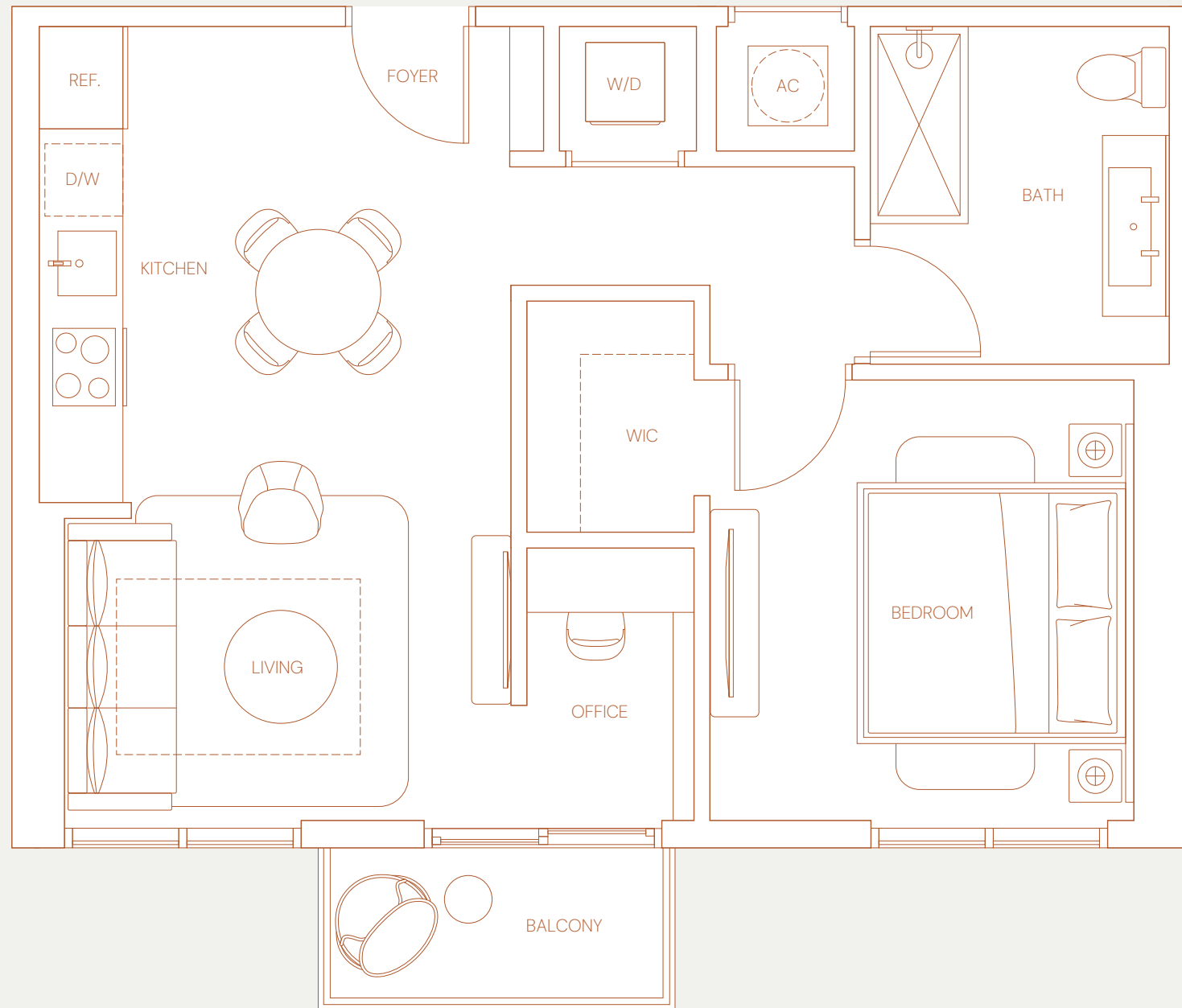
LINE 06

1 BEDROOM
1 BATHROOM
DEN

INTERIOR
617 SQ. FT.

BALCONY
36 SQ. FT.

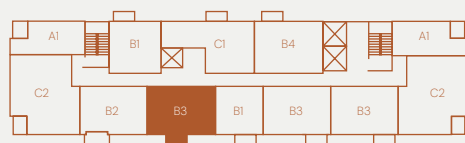
TOTAL
653 SQ. FT.



NORTH



SOUTH



125 NE 14TH STREET, MIAMI, FL. 33132 | 14ROC.COM | +1 786 475 5539

14TH STREET
MIAMI DEVELOPERS, LLC

ORAL REPRESENTATIONS CANNOT BE RELIED UPON AS CORRECTLY STATING THE REPRESENTATION of any jurisdiction where prohibited by law, and your eligibility for purchase will depend upon your state of residence (interior structural components). For your reference, the area of the Unit, determined in accordance with those determined length times width. All dimensions are approximate and may vary with actual construction, and all floor

BUYER OR LESSEE. This is not intended to be an offer to sell, or solicitation to buy, condominium units to residents in the Declaration (which generally only includes the interior airspace between the perimeter walls and excludes closets). Accordingly, the area of the actual room will typically be smaller than the product obtained by multiplying the

MIAMI CONDO LIFESTYLE

RESIDENCE B3

LINES 03-04

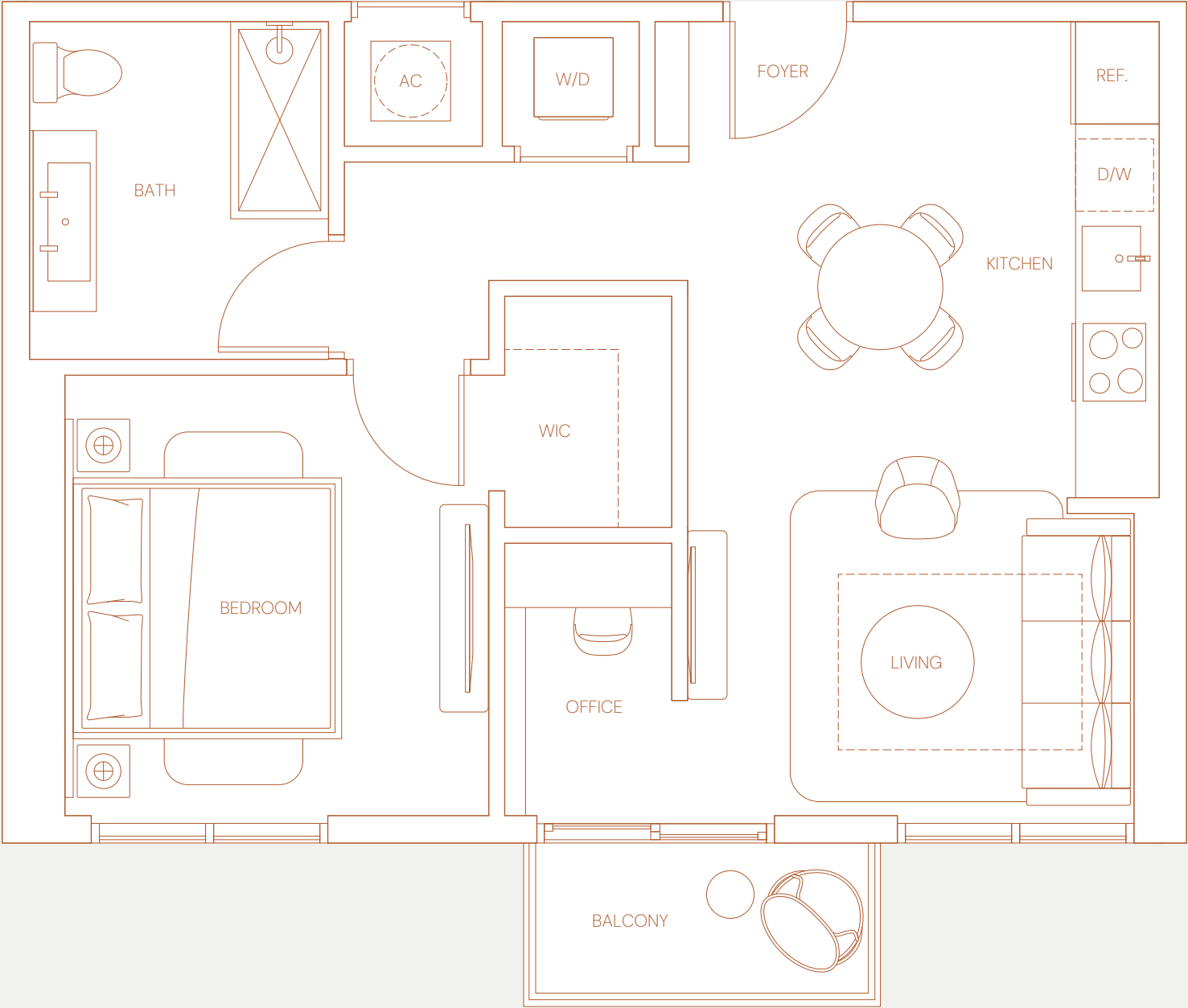
1 BEDROOM
1 BATHROOM
DEN

INTERIOR
617 SQ. FT.

BALCONY
36 SQ. FT.

TOTAL
653 SQ. FT.

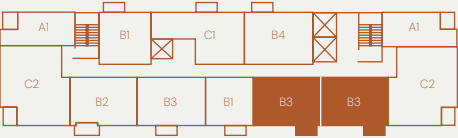
14
ROC
MIAMI



NORTH



SOUTH



125 NE 14TH STREET, MIAMI, FL. 33132 | 14ROC.COM | +1 786 475 5539

14TH STREET
MIAMI DEVELOPERS, LLC

⚠️ ORAL REPRESENTATIONS CANNOT BE RELIED UPON AS CORRECTLY STATING THE REPRESENTATION OF ANY JURISDICTION WHERE PROHIBITED BY LAW, AND YOUR ELIGIBILITY FOR PURCHASE WILL DEPEND UPON YOUR STATE OF RESIDENCE (THIS FLOOR PLAN IS NOT A CONTRACT AND DOES NOT CONSTITUTE AN OFFER OF ANY JURISDICTION WHERE PROHIBITED BY LAW, AND YOUR ELIGIBILITY FOR PURCHASE WILL DEPEND UPON YOUR STATE OF RESIDENCE. For your reference, the area of the Unit, determined in accordance with those designated on the floor plan, is the area of the Unit, determined in accordance with those designated on the floor plan. All dimensions are approximate and may vary with actual construction, and all floor plans are for informational purposes only. The area of the Unit, determined in accordance with those designated on the floor plan, is the area of the Unit, determined in accordance with those designated on the floor plan. All dimensions are approximate and may vary with actual construction, and all floor plans are for informational purposes only.

BUYER OR LESSEE. This is not intended to be an offer to sell, or solicitation to buy, condominium units to residents in the Declaration (which generally only includes the interior airspace between the perimeter walls and excludes the area of the actual room will typically be smaller than the product obtained by multiplying the dimensions shown on the floor plan. Accordingly, the area of the actual room will typically be smaller than the product obtained by multiplying the dimensions shown on the floor plan. Accordingly, the area of the actual room will typically be smaller than the product obtained by multiplying the dimensions shown on the floor plan.



RESIDENCE B4

LINE 12

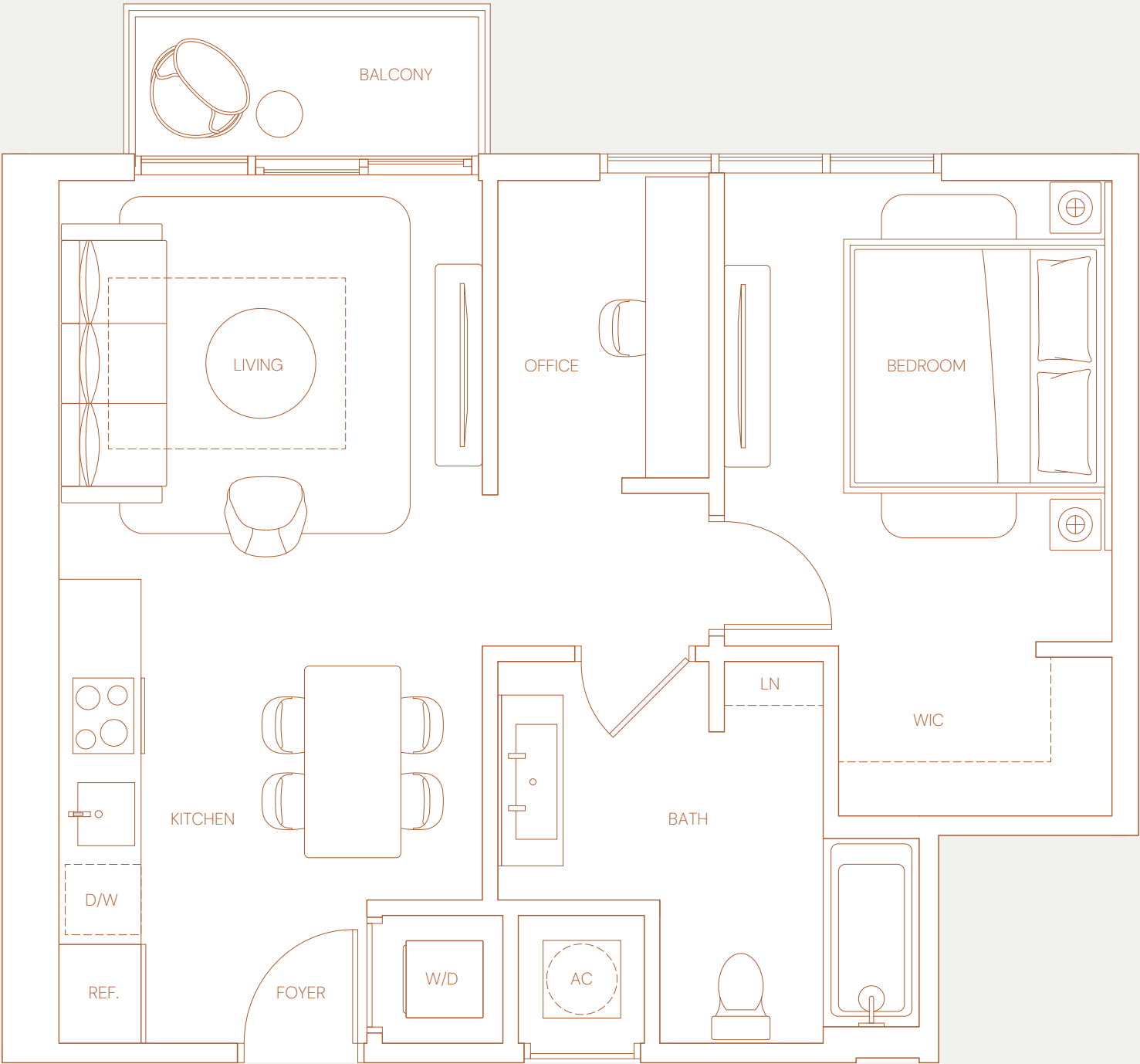
1 BEDROOM
1 BATHROOM
DEN

INTERIOR
634 SQ. FT.

BALCONY
33 SQ. FT.

TOTAL
667 SQ. FT.

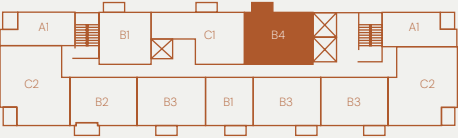
14
ROC
MIAMI



NORTH



SOUTH



125 NE 14TH STREET, MIAMI, FL. 33132 | 14ROC.COM | +1 786 475 5539

14TH STREET
MIAMI DEVELOPERS, LLC

⚠️ ORAL REPRESENTATIONS CANNOT BE RELIED UPON AS CORRECTLY STATING THE REPRESENTATION OF ANY JURISDICTION WHERE PROHIBITED BY LAW, AND YOUR ELIGIBILITY FOR PURCHASE WILL DEPEND UPON YOUR STATE OF RESIDENCE (WHICH GENERALLY ONLY INCLUDES THE INTERIOR AIRSPACE BETWEEN THE PERIMETER WALLS AND EXCLUDES INTERIOR STRUCTURAL COMPONENTS). FOR YOUR REFERENCE, THE AREA OF THE UNIT, DETERMINED IN ACCORDANCE WITH THOSE DEFINITIONS, IS 667 SQ. FT. ACCORDINGLY, THE AREA OF THE ACTUAL ROOM WILL TYPICALLY BE SMALLER THAN THE PRODUCT OBTAINED BY MULTIPLYING THE STATED LENGTH TIMES WIDTH. ALL DIMENSIONS ARE APPROXIMATE AND MAY VARY WITH ACTUAL CONSTRUCTION, AND ALL FLOOR PLANS ARE FOR INFORMATIONAL PURPOSES ONLY.



BUYER OR LESSEE. THIS IS NOT INTENDED TO BE AN OFFER TO SELL, OR SOLICITATION TO BUY, CONDOMINIUM UNITS TO RESIDENTS IN THE DECLARATION (WHICH GENERALLY ONLY INCLUDES THE INTERIOR AIRSPACE BETWEEN THE PERIMETER WALLS AND EXCLUDES STRUCTURAL COMPONENTS). ACCORDINGLY, THE AREA OF THE ACTUAL ROOM WILL TYPICALLY BE SMALLER THAN THE PRODUCT OBTAINED BY MULTIPLYING THE STATED LENGTH TIMES WIDTH. ALL DIMENSIONS ARE APPROXIMATE AND MAY VARY WITH ACTUAL CONSTRUCTION, AND ALL FLOOR PLANS ARE FOR INFORMATIONAL PURPOSES ONLY.

RESIDENCE C1

LINE 11

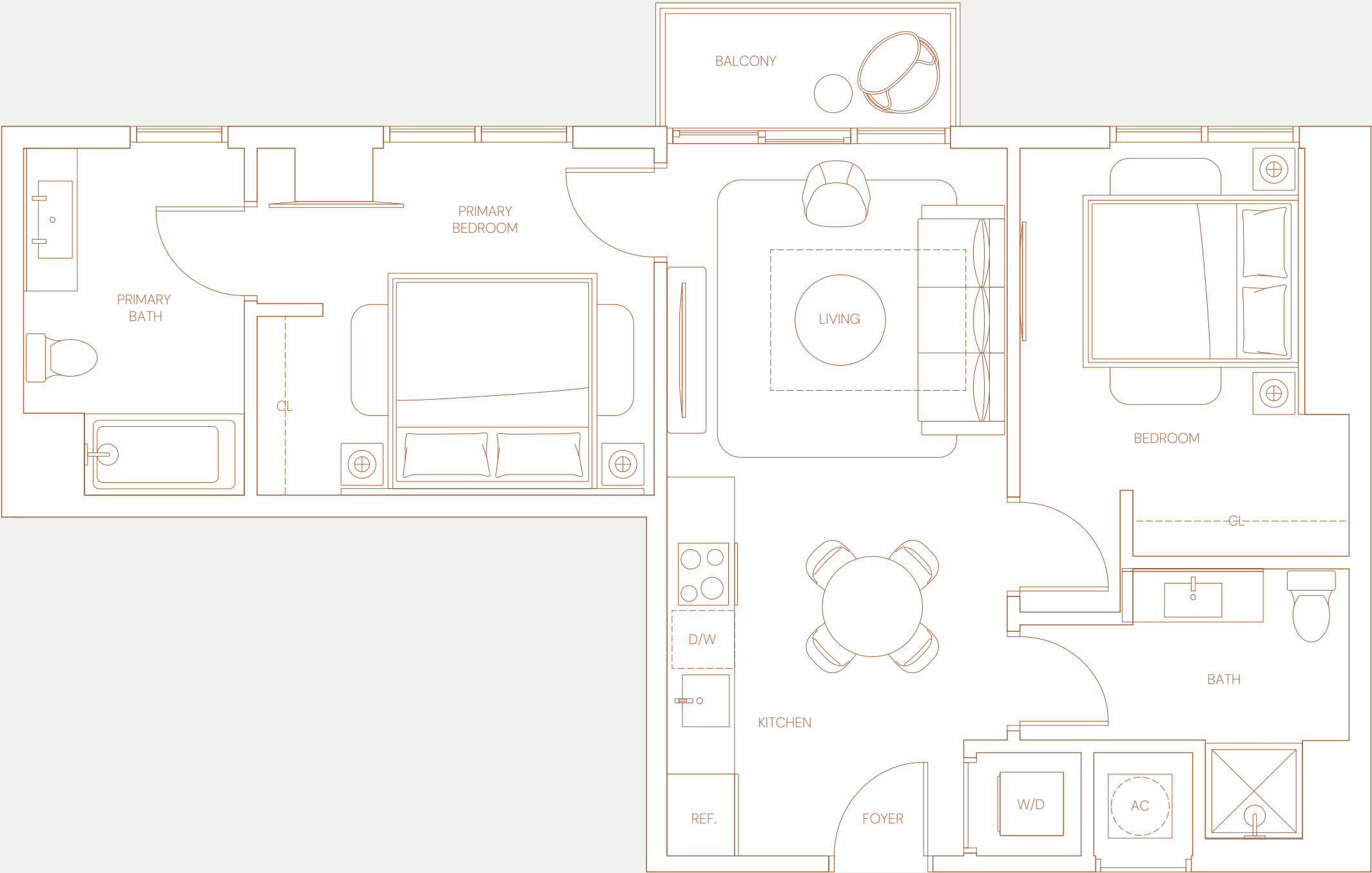
2 BEDROOMS
2 BATHROOMS

INTERIOR
743 SQ. FT.

BALCONY
33 SQ. FT.

TOTAL
776 SQ. FT.

14
ROC
MIAMI



NORTH



SOUTH



125 NE 14TH STREET, MIAMI, FL. 33132 | 14ROC.COM | +1 786 475 5539

14TH STREET
MIAMI DEVELOPERS, LLC

ORAL REPRESENTATIONS CANNOT BE RELIED UPON AS CORRECTLY STATING THE REPRESENTATION OF any jurisdiction where prohibited by law, and your eligibility for purchase will depend upon your state of residence (interior structural components). For your reference, the area of the Unit, determined in accordance with those dimensions, is stated length times width. All dimensions are approximate and may vary with actual construction, and all floor plans are for informational purposes only.

BUYER OR LESSEE. This is not intended to be an offer to sell, or solicitation to buy, condominium units to residents in the Declaration (which generally only includes the interior airspace between the perimeter walls and excludes common areas). Accordingly, the area of the actual room will typically be smaller than the product obtained by multiplying the dimensions.



RESIDENCE C2

LINE 02

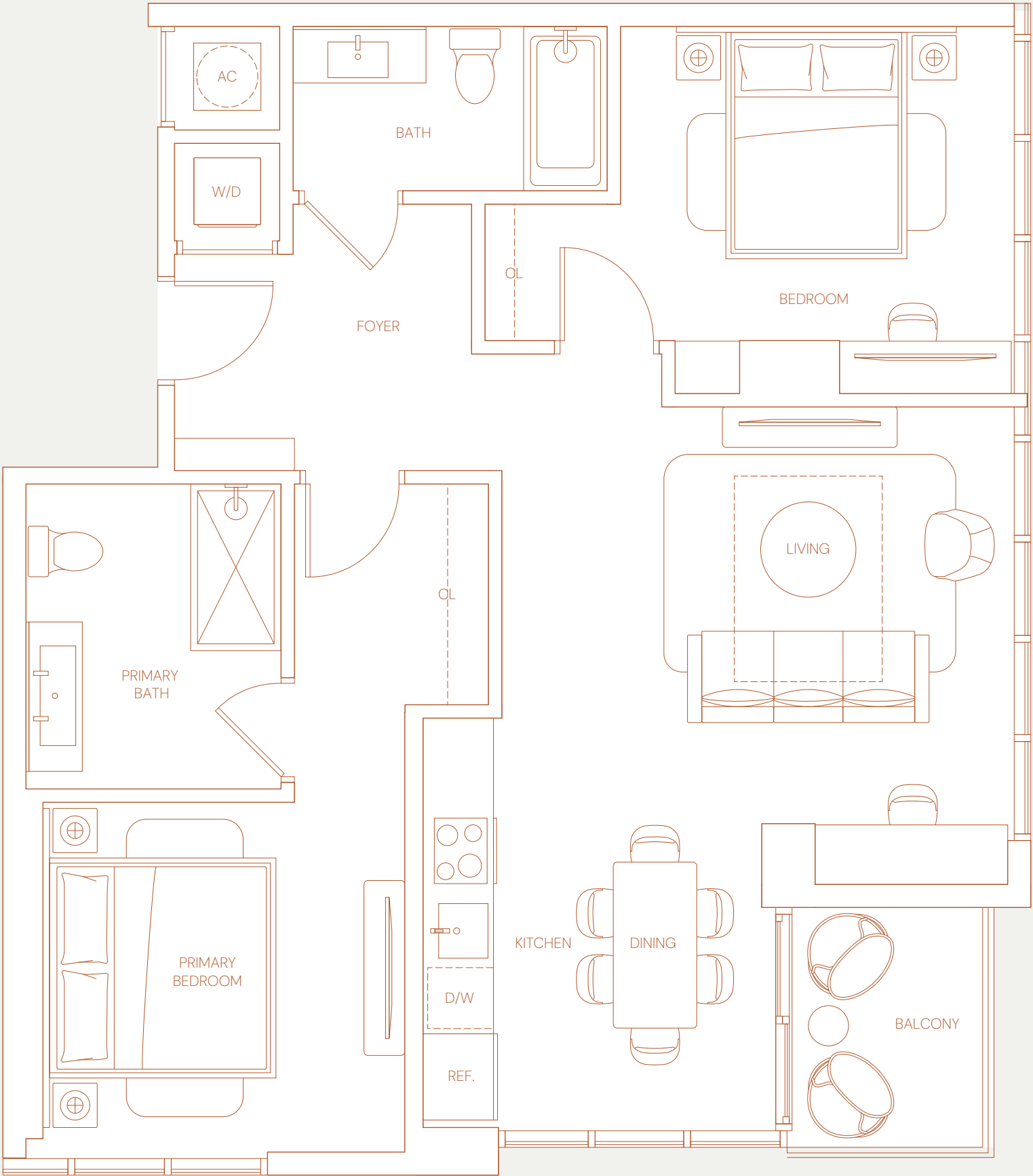
2 BEDROOMS
2 BATHROOMS

INTERIOR
939 SQ. FT.

BALCONY
43 SQ. FT.

TOTAL
982 SQ. FT.

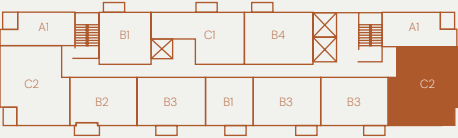
14
ROC
MIAMI



NORTH



SOUTH



125 NE 14TH STREET, MIAMI, FL. 33132 | 14ROC.COM | +1 786 475 5539

14TH STREET
MIAMI DEVELOPERS, LLC

⚠ ORAL REPRESENTATIONS CANNOT BE RELIED UPON AS CORRECTLY STATING THE REPRESENTATI of any jurisdiction where prohibited by law, and your eligibility for purchase will depend upon your state of reside interior structural components). For your reference, the area of the Unit, determined in accordance with those de stated length times width. All dimensions are approximate and may vary with actual construction, and all floor pl



YER OR LESSEE. This is not intended to be an offer to sell, or solicitation to buy, condominium units to residents in the Declaration (which generally only includes the interior airspace between the perimeter walls and excludes uts. Accordingly, the area of the actual room will typically be smaller than the product obtained by multiplying the

RESIDENCE C2

LINE 08

2 BEDROOMS
2 BATHROOMS

INTERIOR
964 SQ. FT.

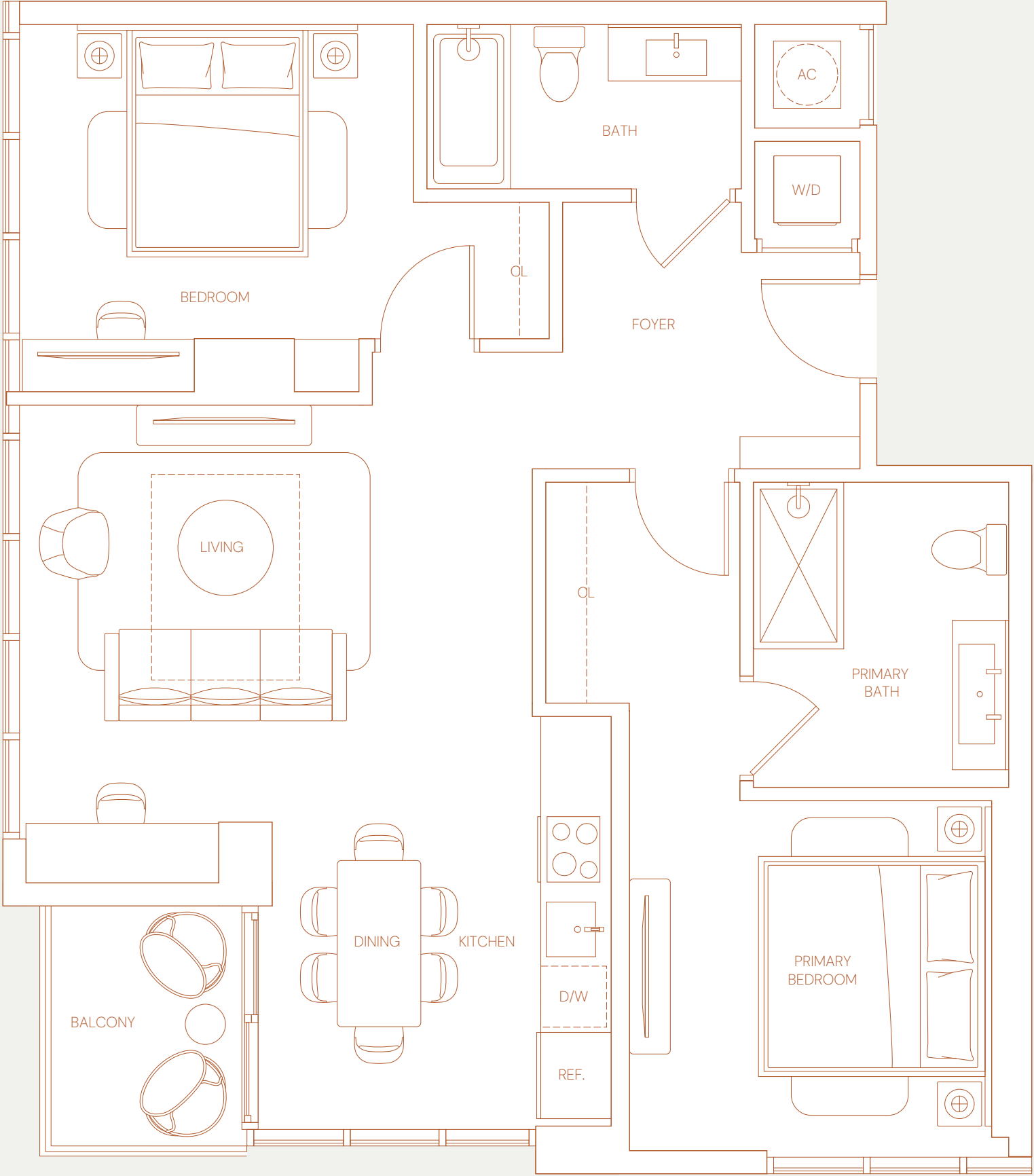
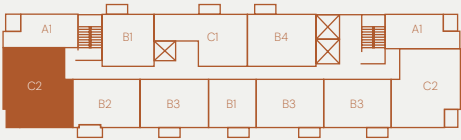
BALCONY
43 SQ. FT.

TOTAL
1007 SQ. FT.

NORTH



SOUTH



14
ROC
MIAMI

125 NE 14TH STREET, MIAMI, FL. 33132 | 14ROC.COM | +1 786 475 5539

14TH STREET
MIAMI DEVELOPERS, LLC

ⓘ ORAL REPRESENTATIONS CANNOT BE RELIED UPON AS CORRECTLY STATING THE REPRESENTATION OF ANY JURISDICTION WHERE PROHIBITED BY LAW, AND YOUR ELIGIBILITY FOR PURCHASE WILL DEPEND UPON YOUR STATE OF RESIDENCE (THIS IS NOT AN OFFER TO SELL, OR SOLICITATION TO BUY, CONDOMINIUM UNITS TO RESIDENTS IN THE DECLARATION (WHICH GENERALLY ONLY INCLUDES THE INTERIOR AIRSPACE BETWEEN THE PERIMETER WALLS AND EXCLUDES OUTSIDE AREAS). ACCORDINGLY, THE AREA OF THE ACTUAL ROOM WILL TYPICALLY BE SMALLER THAN THE PRODUCT OBTAINED BY MULTIPLYING THE STATED LENGTH TIMES WIDTH. ALL DIMENSIONS ARE APPROXIMATE AND MAY VARY WITH ACTUAL CONSTRUCTION, AND ALL FLOOR PLANS ARE FOR INFORMATIONAL PURPOSES ONLY.



ⓘ OR LESSEE. THIS IS NOT INTENDED TO BE AN OFFER TO SELL, OR SOLICITATION TO BUY, CONDOMINIUM UNITS TO RESIDENTS IN THE DECLARATION (WHICH GENERALLY ONLY INCLUDES THE INTERIOR AIRSPACE BETWEEN THE PERIMETER WALLS AND EXCLUDES OUTSIDE AREAS). ACCORDINGLY, THE AREA OF THE ACTUAL ROOM WILL TYPICALLY BE SMALLER THAN THE PRODUCT OBTAINED BY MULTIPLYING THE STATED LENGTH TIMES WIDTH. ALL DIMENSIONS ARE APPROXIMATE AND MAY VARY WITH ACTUAL CONSTRUCTION, AND ALL FLOOR PLANS ARE FOR INFORMATIONAL PURPOSES ONLY.